






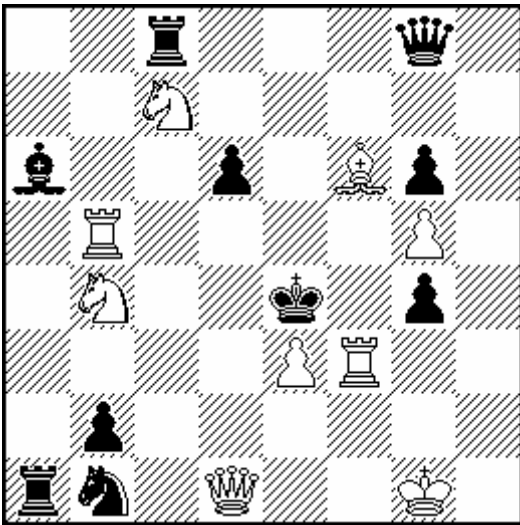
**40 MIĘDZYNARODOWE MISTRZOSTWA POLSKI
W ROZWIĄZYWANIU ZADAŃ SZACHOWYCH** (Warszawa, 04-05.03.2017)

<i>Imię</i>	<i>Nazwisko</i>	<i>Państwo</i>

1. runda: DWUCHODÓWKI (20 min.)

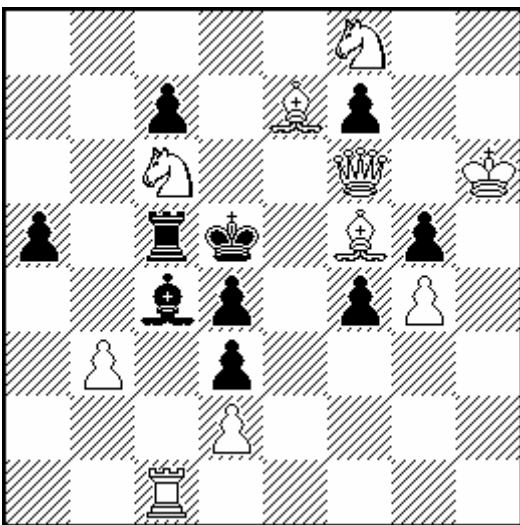
№1



#2

9+10

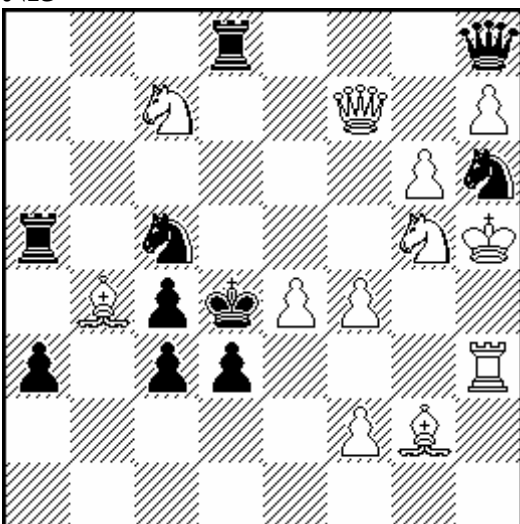
№2



#2

10+10

№3



#2

12+10

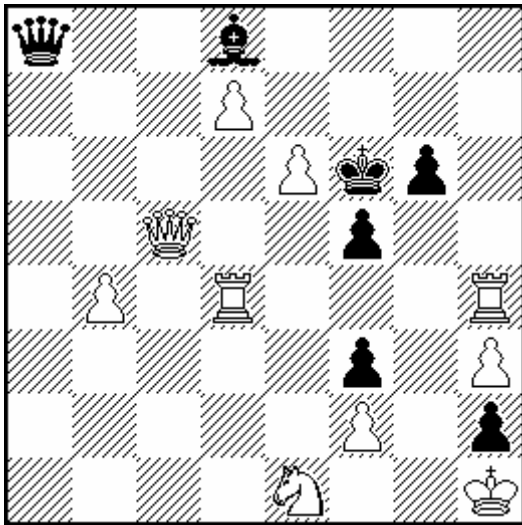
**40 MIĘDZYNARODOWE MISTRZOSTWA POLSKI
W ROZWIĄZYWANIU ZADAŃ SZACHOWYCH** (Warszawa, 04-05.03.2017)

<i>Imię</i>	<i>Nazwisko</i>	<i>Państwo</i>

♔	♚	♖	♜	♞

2. runda: TRZYCHODÓWKI (60 min.)

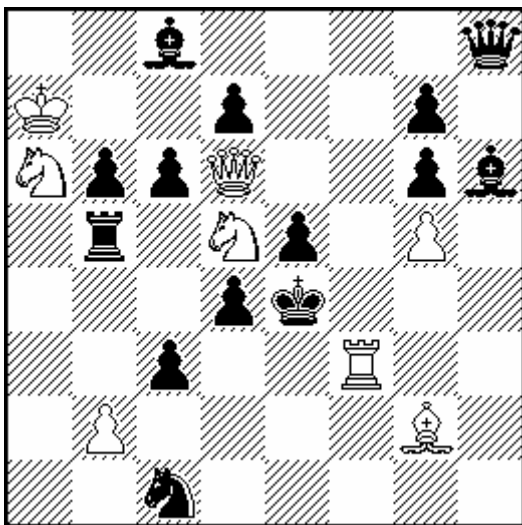
№4



#3

10+7

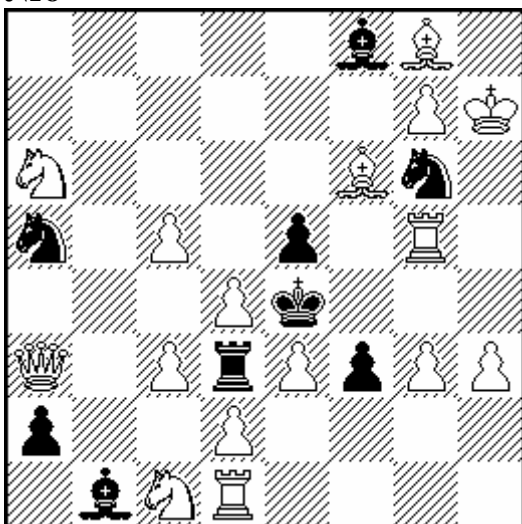
№5



#3

8+14

№6








#3

16+9

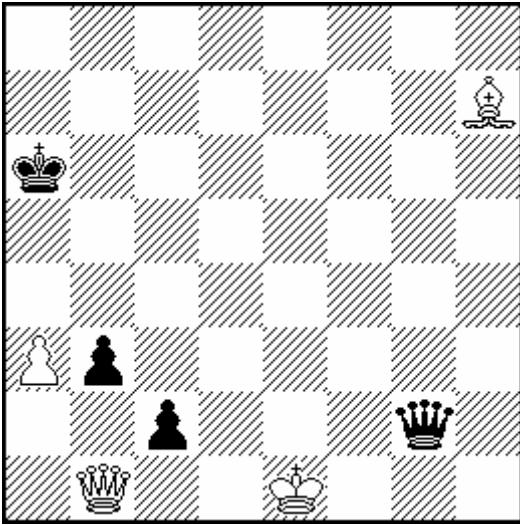
40 MIĘDZYNARODOWE MISTRZOSTWA POLSKI W ROZWIĄZYWANIU ZADAŃ SZACHOWYCH (Warszawa, 04-05.03.2017)

<i>Imię</i>	<i>Nazwisko</i>	<i>Państwo</i>

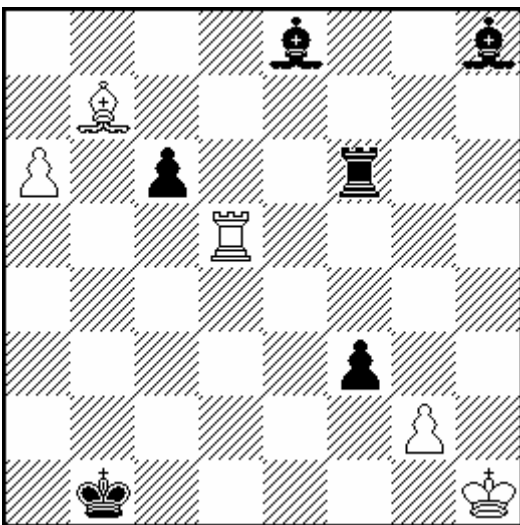
3. runda: STUDIA (100 min.)

№7



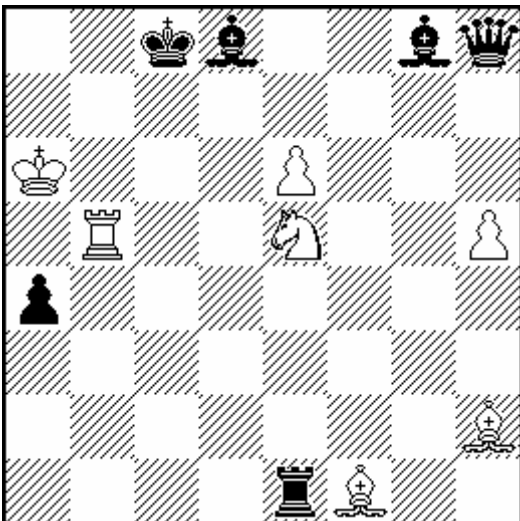
= 4+4

№8



= 5+6





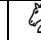
№9



+ 7+6

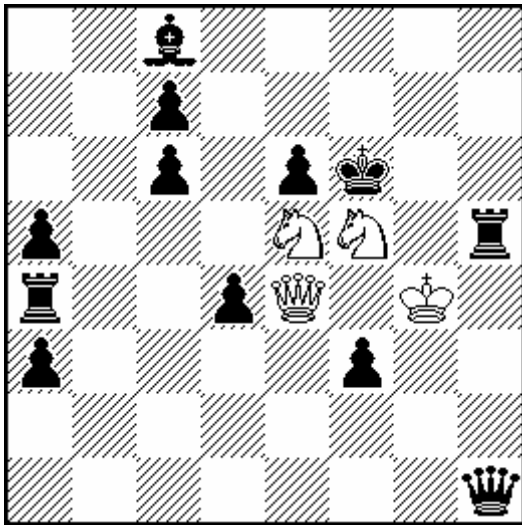
**40 MIĘDZYNARODOWE MISTRZOSTWA POLSKI
W ROZWIĄZYWANIU ZADAŃ SZACHOWYCH** (Warszawa, 04-05.03.2017)

<i>Imię</i>	<i>Nazwisko</i>	<i>Państwo</i>

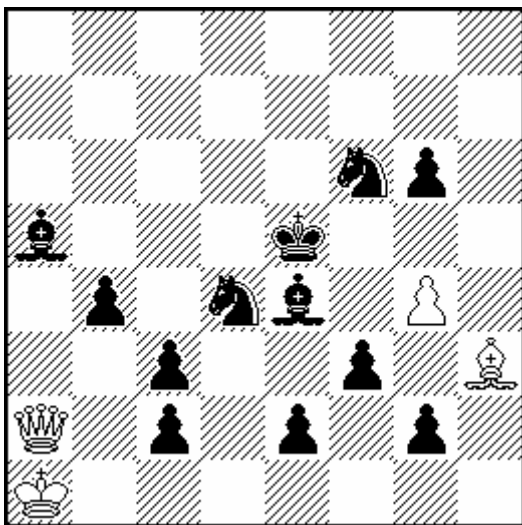
4. runda: MATY POMOCNICZE (50 min.)

№10



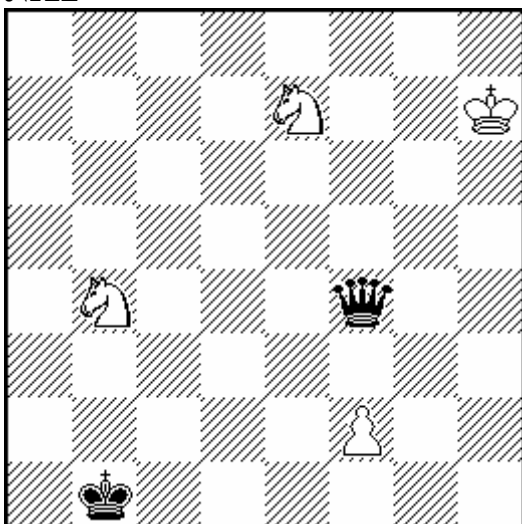
H#2 5 Sol 4+12

№11



H#3 3 Sol 4+12






№12



H#5 2 Sol 4+2

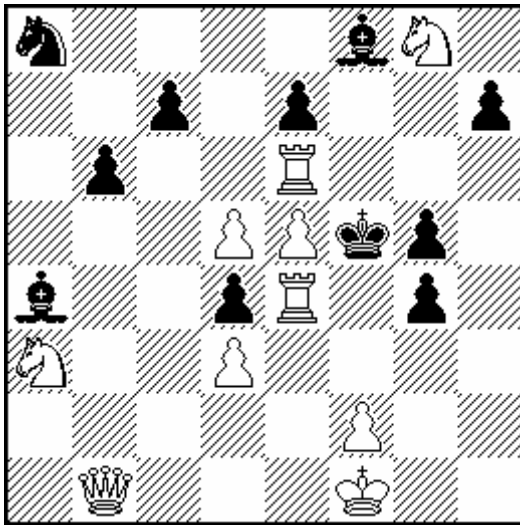
40 MIĘDZYNARODOWE MISTRZOSTWA POLSKI
W ROZWIĄZYWANIU ZADAŃ SZACHOWYCH (Warszawa, 04-05.03.2017)

<i>Imię</i>	<i>Nazwisko</i>	<i>Państwo</i>

5. runda: WIELOCHODÓWKI (80 min.)

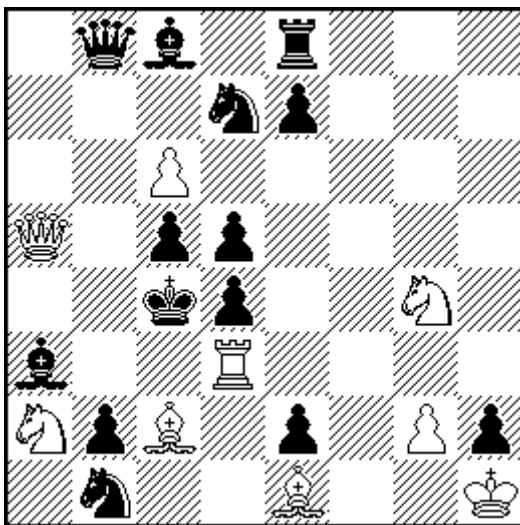
№13



#4

10+11

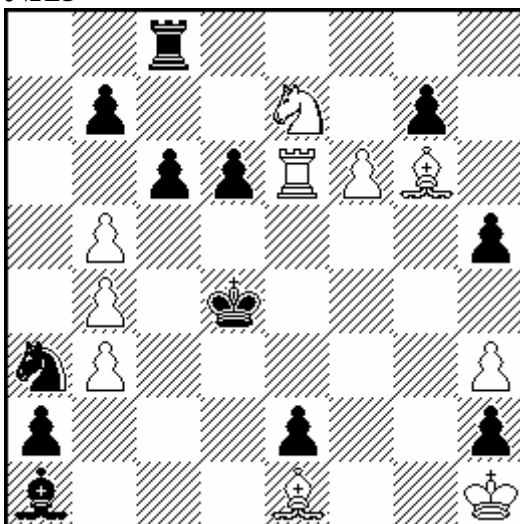
№14



#4

9+14

№15





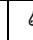


#5

10+12

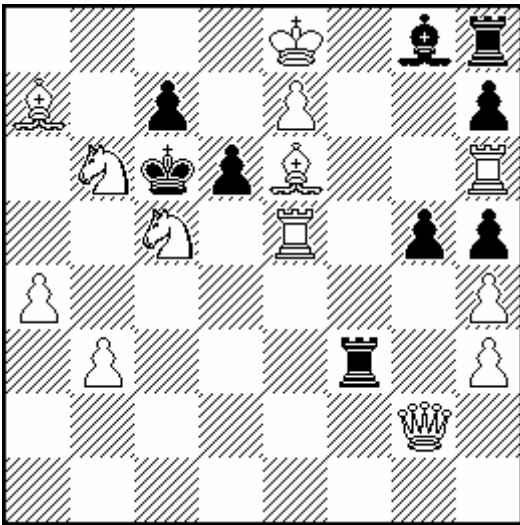
**40 MIĘDZYNARODOWE MISTRZOSTWA POLSKI
W ROZWIĄZYWANIU ZADAŃ SZACHOWYCH** (Warszawa, 04-05.03.2017)

<i>Imię</i>	<i>Nazwisko</i>	<i>Państwo</i>

6. runda: SAMOMATY (50 min.)

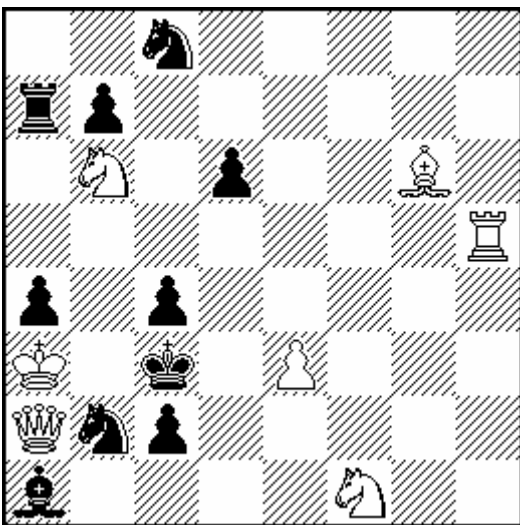
№16



S#2

13+9

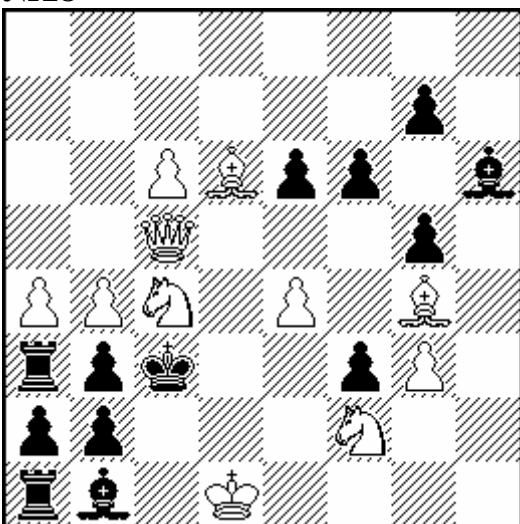
№17



S#3

7+10

№18



S#5

11+13