

## Hans Gruber - Director, 8th WCCT - July 16th, 2007

Dear 8th WCCT national team captains,

thank you for rich communication after the recent mailing. Currently I am sorting all protests you submitted to me and try to unify the style of presentation.

Meanwhile I can tell you that all of you, who have responded, are in favour of letting participate country XXX in the 8th WCCT.

We do so with some reservation, but in order to promote chess compositions worldwide, XXX's participation is accepted although XXX failed to register. It is difficult to understand, why XXX did not submit the compositions electronically, because the team captain obviously has access to the internet.

Herewith I ask the judging countries to look at XXX's compositions as well, and I ask you all to look at the compositions and eventually indicate claims and protests. I tested the three-movers and the helpmates myself and confirmed the „C+“. The entries are repeated below.

Please note that one commentary was already received after the last letter: It was argued that study D-XXX/1 is incorrect:

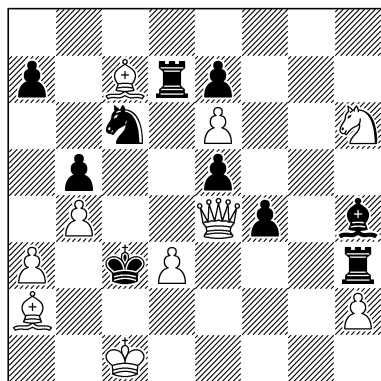
- 2.– Tb7! 3.Ka3 Ld1 etc. Black wins
- 3.Th5+! Kg7 4.Tg5+ K×f7 5.Se5+ and a draw is minimum, White can win

All best wishes,

Hans Gruber

### Section B: Three-movers

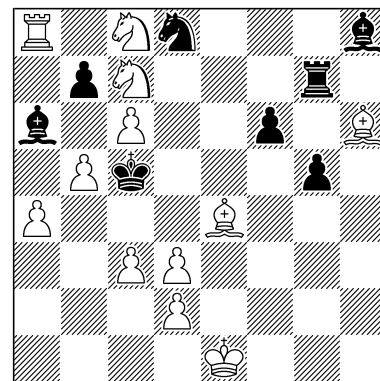
XXX-B/1



#3

C+ (10+10)

XXX-B/2



#3

C+ (12+8)

(XXX-B/1) 1.d4 [2.Dc2+ K×d4 3.Sf5#]

1.– S×d4 2.L×e5 [3.Dc2#] T×h2/Td3 3.Df3/Dc6#

1.– S×b4 2.La5 [3.L×b4#] T×d4 3.Dc2#

1.– Td3 2.D×c6+ K×d4 3.Sf5#

1.– T×h2 2.Df3+ K×d4 3.Sf5#

(XXX-B/2) 1.Ke2 [2.d4+ Kc4 3.Ld5#]

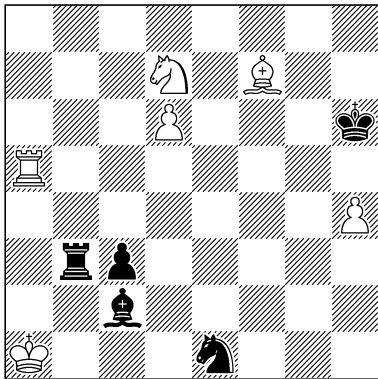
1.– L×b5 2.Ta5 [3.T×b5#] b×c6 3.Sa6#

1.– Te7 2.Lf8 [3.L×e7#] S×c6,Sf7 3.Se6#

- 1.- T×c7 2.Lf8+ Te7 3.L×e7#  
 1.- Td7 2.Lf8+ Td6/Te7 3.L×d6/L×e7#

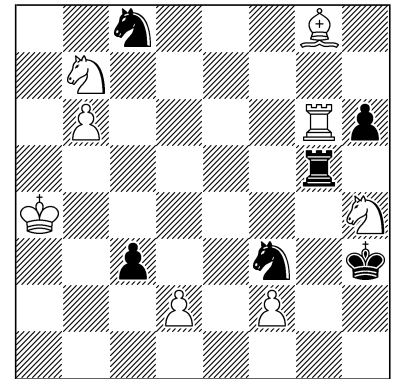
## Section D: Endgame studies

XXX-D/1



Draw, Black to move (6+5)

XXX-D/2



Draw, Black to move (8+6)

(XXX-D/1) 1.- Tb1+ 2.Ka2 La4 **3.Lg6 [a]** Tb2+ [b] 4.Ka3 L×d7 5.h5 = [c]

a) 3.Tc5? c2 4.Se5 Kg7!±; 4.- c1=D? 5.T×c1 T×c1 6.d7 Td1 7.Le8 Kg7 8.d8=D T×d8 9.L×a4 =

b) 3.- K×g6 4.Se5+! =

c) 5.Le4? Te2!±

(XXX-D/2) 1.- c2 [a] **2.Tc6 S×b6+ [b]** 3.Ka3 Sd4 [c] **4.Sf3 [e]** **Tg6 [f]** 5.Tc5 Sd7 [g] 6.Tc4 [h] Ta6+ [i] 7.Kb2 Tb6+ 8.Ka2 [j]

a) 1.- T×g6 2.S×g6 c2 3.Sf4+ Kg4 4.Sd3 =; 1.- c×d2 2.Le6+ K×h4 3.T×h6+ Th5 4.T×h5+ K×h5 5.Lb3 =; 1.- K×h4? 2.T×h6+ =

b) 2.- Sd4 3.T×c8 T×g8 4.Tc3+

c) 3.- K×h4 4.Lb3 Sd4 5.T×h6+ Kg4 [d] 6.L×c2 S×c2+ 7.Kb2 =

d) 5.- Th5 6.T×h5+ =

e) 4.Tc3+? K×h4±

f) 4.- S×c6 5.S×g5+ h×g5 6.Kb2; 4.- S×f3 5.Kb3; 4.- T×g8 5.S×d4 =

g) 5.- S×f3 6.Lb3 =

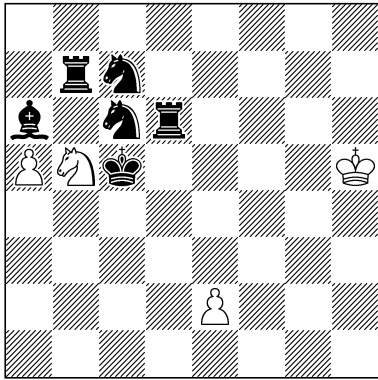
h) 6.Tc8? T×g8!; 6.Tc7? Ta6+ 7.Kb2 Tb6+ 8.Ka2 T×b7±

i) 6.- T×g8 7.S×d4 =

j) 8.Ka3? Tb3+! 9.Ka2 T×f3 10.Lh7 Se5 11.Tc5 Sd3 12.L×d3 T×d3 13.Sa5 T×d2 14.Kb2 Td1+±; 8.Ka1? Sb3+! 9.Ka2 c1=D± or 9.Kb2 S×d2+ 10.K×c2 S×c4±

## Section E: Helpmates

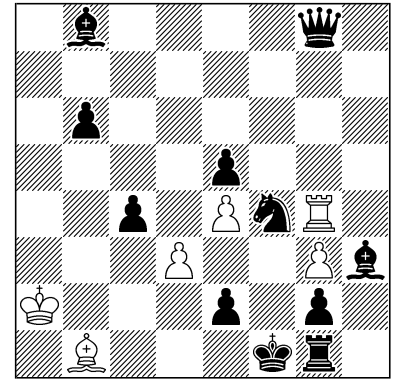
XXX-E/1



H#3 C+ (4+6)

b) ♞c7→c4

XXX-E/2



H#3 C+ (6+11)

b) ♙d3↔♞f4

(XXX-E/1) a) 1.Sd5 Sc7 **2.Lc4** e3 3.Tb5 **Sa6#**

b) 1.Td4 Sd6 **2.Tb4** e4 3.Lb5 **Sb7#**

Theme, Umnov, critical move with self-block, Grimshaw, model mates.

(XXX-E/2) a) 1.e1=L d×c4 2.Sd3 Tf4+ **3.Sf2 Ld3#**

b) 1.e1=T f×e5 2.Sf4 Ld3+ **3.Se2 Tf4#**

Theme, reciprocal Umnov, promotions, change of functions of Tg4 and Lb1, pin-mates.