

SECTION H: RETROS

Judging countries: Argentina, France, Germany, Ukraine, United States
Reserve:

Theme (proposed by Ukraine):

Proofgames are required. Twins and multiple solutions are allowed.

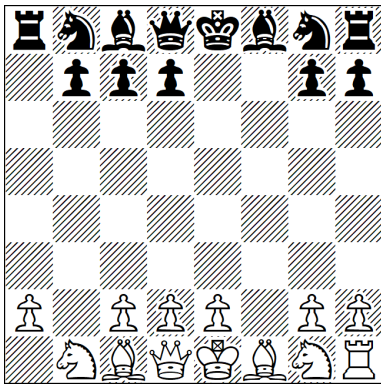
Square A is the home square for an unpromoted piece X.

In the course of solution the following elements occur at least once (in any order):

1. The original piece X and/or its original sibling is captured (King's Bishop and Queen's Bishop are not considered siblings).
2. A pawn of the same colour promotes to a piece of the same type as X. This promoted piece then visits square A (Pronkin effect). It is not required to stay on this square.

A pawn of the opposite colour promotes on square A. This promoted piece is later captured (Ceriani-Frolkin effect).

H01



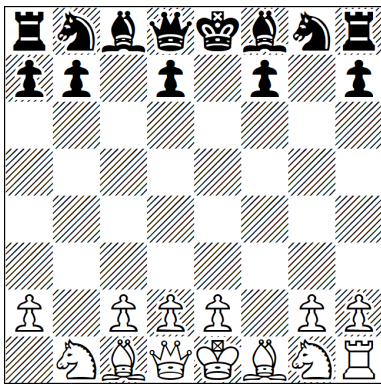
1.f4 a5 2.f5 a4 3.f6 a3 4.f×e7 a×b2 5.e×d8=S b×a1=Q
6.S×f7 Qf6 7.Sd8 Q×d8

bQ Pronkin, wS Ceriani-Frolkin, homepage.

PG7,0

(13+13) C+

H02



a) 1.f4 c5 2.f5 c4 3.f6 c3 4.f×g7 c×b2 5.g×f8=B b×a1=B
6.B×e7 Bg7 7.Bf8 B×f8
Thematic square: f8. Thematic pieces: black bishop,
white promoted bishop.

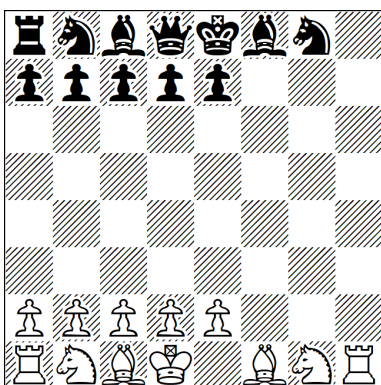
b) 1.f4 c5 2.f5 c4 3.f6 c3 4.f×e7 c×b2 5.e×d8=S b×a1=Q
6.S×f7 Qf6 7.Sd8 Q×d8
Thematic square: d8. Thematic pieces: black queen,
white promoted knight.

Compare to PDB P1112019 by Yaakov Mintz.

PG7,0

b) ♠f7→g7 (13+13) C+

H03



1.h4 f5 2.h5 f4 3.h6 f3 4.h×g7 f×g2 5.g×h8=R g×h1=S
6.R×h7 S×f2 7.Rh1 S×d1 8.K×d1

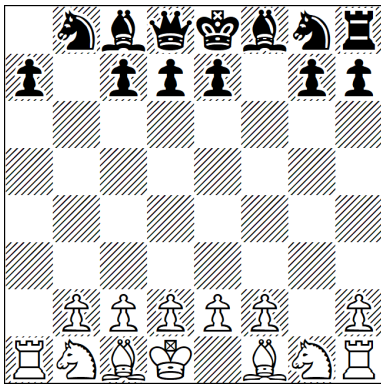
Thematic square: h1.

Thematic pieces: white rook, black promoted knight.

PG7,5

(12+12) C+

H04



1.a4 f5 2.a5 f4 3.a6 f3 4.a×b7 f×g2 5.b×a8=B g×f1=S
6.Bg2 Se3 7.Bf1 S×d1 8.K×d1

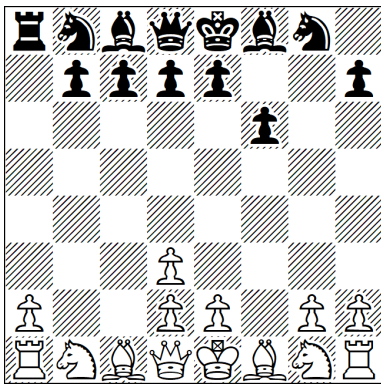
Thematic square: f1. Thematic pieces: white bishop, black promoted knight.

Additional features: Prentos theme, black homebase.

PG7,5

(13+13) C+

H05



1.f4 a5 2.f5 a4 3.f6 a3 4.f×g7 a×b2 5.g×h8=B b×c1=S
6.Bb2 Sd3+ 7.c×d3 f6 8.Bc1

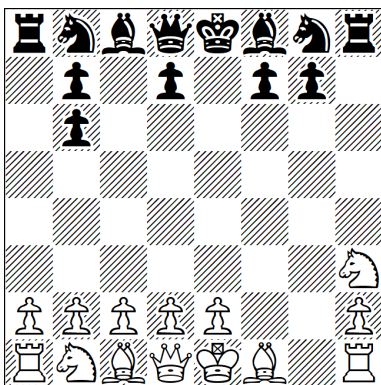
Thematic square: c1

Thematic pieces: White bishop and promoted black knight

PG7,5

(14+13) C+

H06



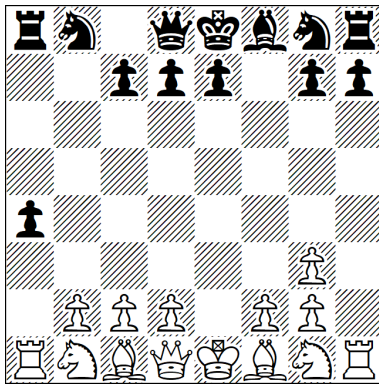
a) 1.f4 h5 2.f5 h4 3.f6 h3 4.f×e7 h×g2 5.Sh3 g1=Q
6.e×d8=B Qg5 7.B×c7 Qd8 8.Bb6 a×b6
b) 1.f4 h5 2.f5 h4 3.f6 h3 4.f×e7 h×g2 5.Sh3 g1=B
6.e×f8=S Bc5 7.S×d7 Bf8 8.Sb6 a×b6

In a) bQ-wB promotions; in b) bB-wS promotions.

PG8,0

b) ♠d7→c7 (14+13) C+

H07a



1.a4 f5 2.a5 f4 3.a6 f3 4.a×b7 f×e2 5.b×c8=B e×f1=S
6.Ba6 Sg3 7.Bf1 a5 8.h×g3 a4

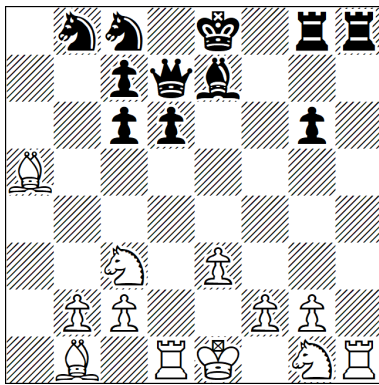
Thematic square: f1

Thematic pieces: Pronkin wB, Ceriani-Frolkin bS

PG8,0

(14+13) C+

H07b



1.g4 a3 2.g5 a2 3.g6 Ra3 4.g×h7 Re3+ 5.d×e3 g6 6.Qd6
e×d6 7.Bd2 Se7 8.Ba5 Rg8 9.h8=Q Sc8 10.Qc3 Be7
11.Qc6 d×c6 12.Sc3 Qd7 13.Rd1 a1=R 14.Bc4 Ra4
15.Ba2 Rh4 16.Bb1 Rhh8

Thematic square: h8

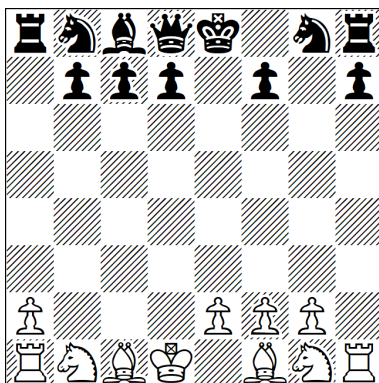
Thematic pieces: Pronkin bR, Ceriani-Frolkin wQ

Captured original bR is the sibling of bRh8

Combining phases A & B, AUW.

PG16,0 From diagram A (12+11) C+

H08



1.h4 a5 2.h5 a4 3.h6 a3 4.h×g7 a×b2 5.g×f8=B b×c1=R
6.B×e7 R×c2 7.Ba3 R×d2 8.Bc1 R×d1+ 9.K×d1

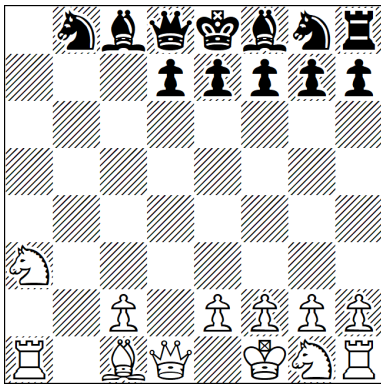
Thematic square: c1.

Thematic pieces: white bishop, black promoted rook.

PG8,5

(11+12) C+

H09



1.a4 c5 2.a5 c4 3.a6 c3 4.a×b7 c×b2 5.b×a8=R b×a1=S
6.R×a7 Sb3 7.Ra1 S×d2 8.Sa3 S×f1 9.K×f1

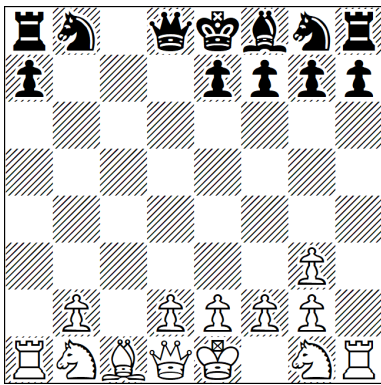
Thematic square: a1.

Thematic pieces: white rook, black promoted knight.

PG8,5

(12+12) C+

H10



1.a4 d5 2.a5 d4 3.a6 d3 4.a×b7 d×c2 5.b×c8=Q c×d1=S
6.Q×c7 Se3 7.Qc2 S×f1 8.Qd1 Sg3 9.h×g3

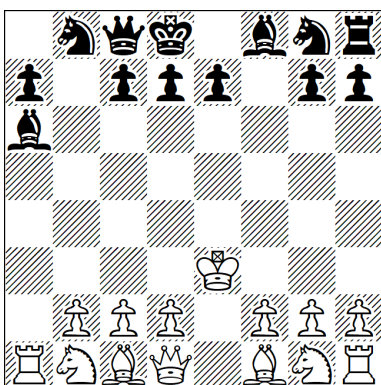
Thematic square: d1

Thematic pieces: White queen and promoted black knight

PG8,5

(13+12) C+

H11



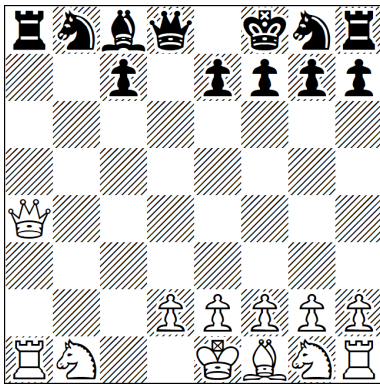
1.a4 f5 2.a5 f4 3.a6 f3 4.a×b7 f×e2 5.b×a8=Q e×d1=R+
6.Ke2 Ba6+ 7.Ke3 Qc8 8.Qf3 Kd8 9.Q×d1

Reciprocal wQ and bR promotions, each occurring on the other's home-square.

PG8,5

(14+13) C+

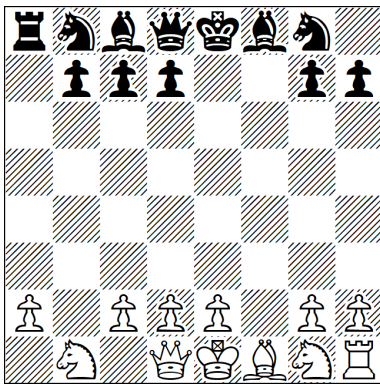
H12



1.c4 a5 2.c5 a4 3.c6 a3 4.c×b7 a×b2 5.b×a8=S b×c1=R
6.Sb6 Rc2 7.S×d7 R×a2 8.S×f8 Ra8 9.Qa4+ K×f8

PG9,0 (12+12) C+

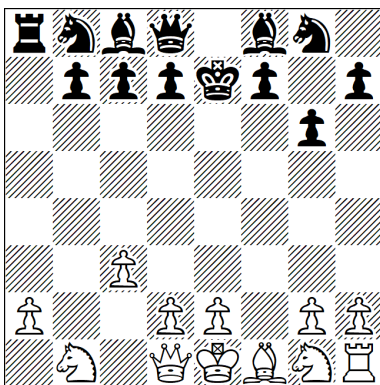
H13



a) 1.f4 a5 2.f5 a4 3.f6 a3 4.f×e7 a×b2 5.e×d8=S b×c1=Q
6.S×f7 Qb2 7.S×h8 Q×a1 8.Sf7 Qf6 9.Sd8 Q×d8
b) 1.f4 a5 2.f5 a4 3.f6 a3 4.f×e7 a×b2 5.e×f8=S b×a1=B
6.Sg6 Bb2 7.S×h8 B×c1 8.Sg6 Ba3 9.Sf8 B×f8

PG9,0 b) + ♠f7 (12+12) C+

H14

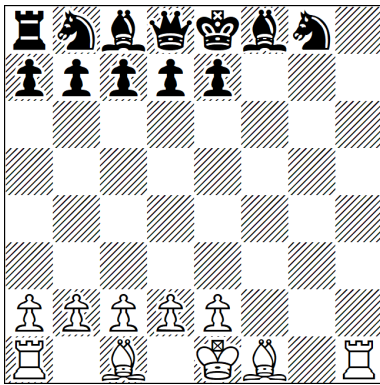


1.f4 a5 2.f5 a4 3.f6 a3 4.f×e7 a×b2 5.e×f8=S b×a1=B
6.Bb2 g6 7.B×h8 Ke7 8.Bg7 B×g7 9.c3 B×f8

Ceriani-Frolkin
Pronkin
Schnoebelen
Phoenix
Bicolour Bristol

PG9,0 (12+13) C+

H15



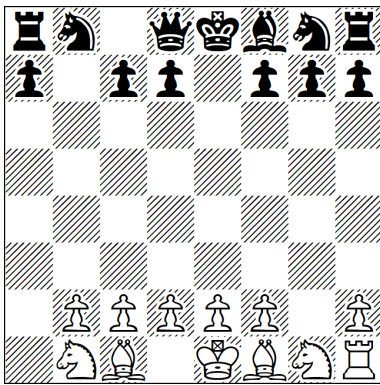
1.Sc3 f5 2.Se4 fxe4 3.Sf3 exf3 4.h4 fxg2 5.h5 gxh1=S
6.h6 Sxf2 7.hxg7 Sxd1 8.gxh8=R Sf2 9.Rxh7 Sh1 10.Rxh1

Thematic square: h1.

Thematic pieces: white rook, black promoted knight.

PG9,5 (10+12) C+

H16



1.a4 e5 2.Ra3 e4 3.Rf3 exf3 4.a5 fxg2 5.a6 gxh1=S
6.axb7 Se3 7.bxc8=B Sxd1 8.Bb7 Se3 9.Bg2 Sf1 10.Bxf1

Thematic square: f1

Thematic pieces: White bishop and promoted black knight

Themes:

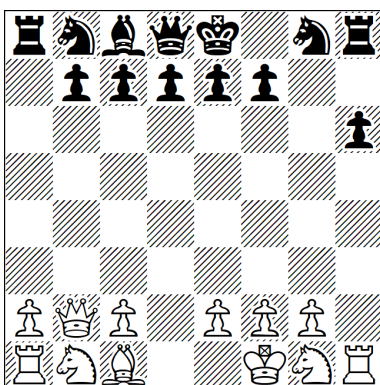
Ceriani-Frolkin → Prentos

Homebase

Switchback × 2

PG9,5 (12+13) C+

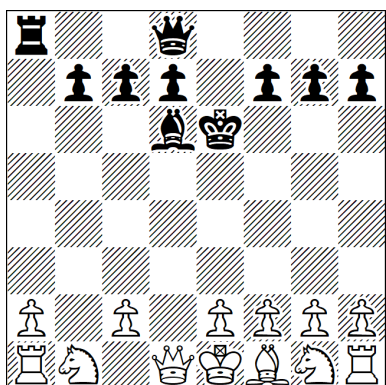
H17



1.h4 a5 2.h5 a4 3.h6 a3 4.hxg7 axb2 5.gxf8=B bxc1=S
6.Bh6 Sb3 7.Qc1 Sxd2 8.Qb2 Sxf1 9.Bc1 h6 10.Kxf1

PG9,5 (12+13) C+

H18a



1.d4 a5 2.d5 a4 3.d6 a3 4.dxe7 axb2 5.exd8=R+ Ke7
6.Rxc8 Ke6 7.Rxb8 Bd6 8.Rxg8 bxc1=Q 9.Rxh8 Qg5
10.Rd8 Qxd8

Thematic square: d8

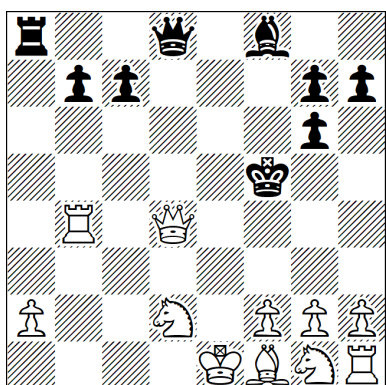
Thematic pieces: Pronkin bQ, Ceriani-Frolkin wR

Promoted Ceriani-Frolkin piece captured on the promotion square.

PG10,0

(13+10) C+

H18b



1.e4 Bf8 2.e5 Kf5 3.e6 d5 4.e7 d4 5.exf8=S d3 6.Sg6
dxc2 7.Qd4 c1=B 8.Sd2 Ba3 9.Rb1 Bf8 10.Rb4 fxg6

Thematic square: f8

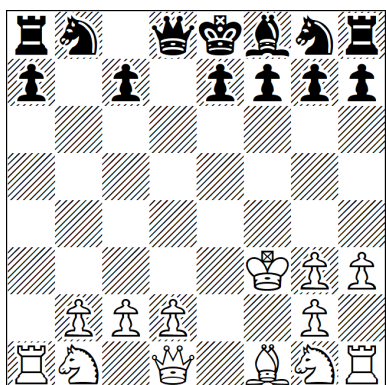
Thematic pieces: Pronkin bB, Ceriani-Frolkin wS

PG10,0

From diagram A

(11+9) C?

H19



1.a4 d5 2.a5 d4 3.a6 d3 4.axb7 dxe2 5.bxc8=B
exf1=S 6.Ke2 Sg3+ 7.Kf3 Se2 8.Ba6 Sxc1 9.Bf1 Se2
10.h3 Sg3 11.fxg3

Thematic square f1 (Pronkin bishop, Frolkin knight).

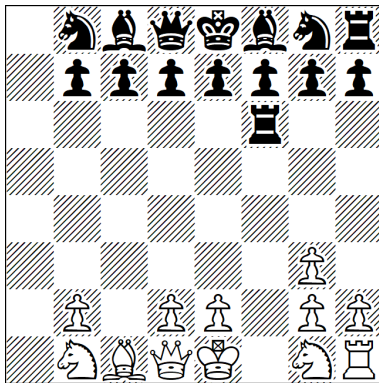
1.a4 d5 2.a5 d4 3.a6 d3 4.axb7 dxe2 5.bxc8=Q
exd1=S 6.Qg4 Sc3 7.Qd1 Sa2 8.Ke2 Sxc1+ 9.Kf3 Se2
10.h3 Sg3 11.fxg3

Thematic square d1 (Pronkin queen, Frolkin knight).

PG10,5

1.1.1.1.1.1.1.1.2.1.1... (13+13) C+

H20



1.a4 a5 2.Ra3 Ra6 3.Rb3 Rf6 4.Rb4 a×b4 5.a5 b3 6.a6 b×c2 7.a7 c×d1=S 8.a8=Q Se3 9.Qa4 S×f1 10.Qd1 Sg3 11.f×g3

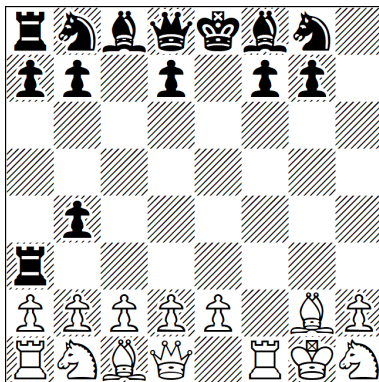
Thematic square: d1.

Thematic pieces: white queen, black promoted knight.

PG10,5

(12+15) C+

H21



1.f4 h5 2.f5 h4 3.f6 h3 4.f×e7 h×g2 5.e×f8=B Rh3 6.Bb4 Ra3 7.Sh3 g1=B 8.Bg2 Bc5 9.Sf2 Bf8 10.0-0 c5 11.Sh1 c×b4

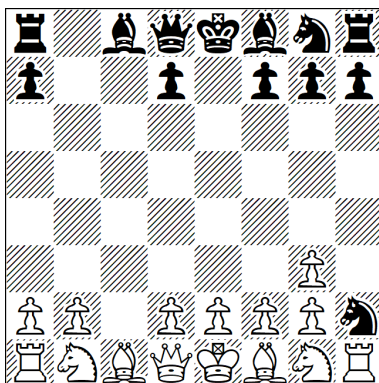
Thematic square: f8

Thematic pieces: black bishop, white promoted bishop.

PG11,0

(14+14) C+

H22



1.c4 Sc6 2.c5 Se5 3.c6 Sg4 4.c×b7 c5 5.b8=S c4 6.Sc6 c3 7.S×e7 c2 8.Sd5 c×b1=Q 9.Sc3 Qd3 10.Sb1 Qg3 11.h×g3 Sh2

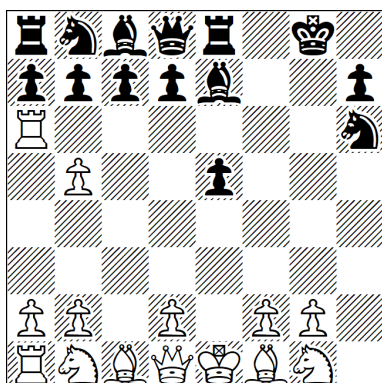
Thematic square: b1

Thematic pieces: white knight, black promoted queen.

PG11,0

(15+13) C+

H23a

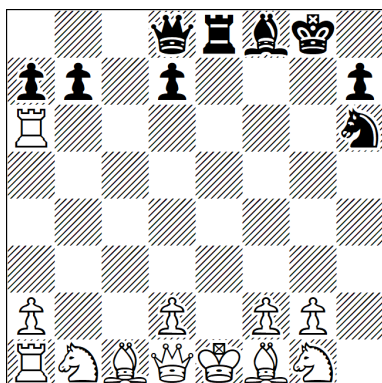


1.h4 f5 2.h5 f4 3.h6 f3 4.hxg7 fxg2 5.Rh6 exf1=B 6.Ra6 Sh6 7.g8=B Bb5 8.Bc4 e5 9.Bf1 Be7 10.c4 0-0 11.cxb5 Re8

Thematic square: f1
 Thematic pieces: Pronkin wB, Ceriani-Frolkin bB
 Black king-side castling

PG11,0 (14+14) C+

H23b



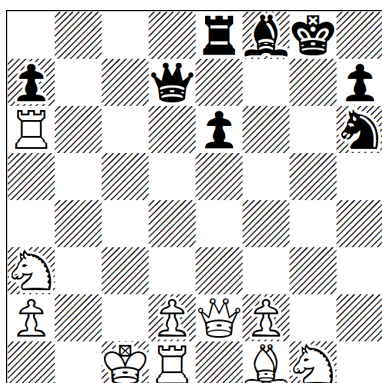
1.b6 e4 2.bxc7 e3 3.cxb8=Q e2 4.Qxa8 exd1=S 5.Qxc8 Sxb2 6.Qc2 Sd1 7.Qxd1 Bf8+

Thematic square: d1
 Thematic pieces: Pronkin wQ, Ceriani-Frolkin bS

C-F piece is captured on its promotion square

PG7,0 From diagram A (12+9) C+

H23c

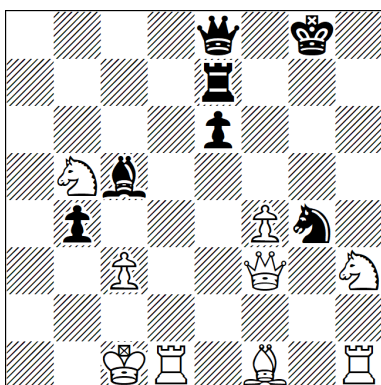


1.Qe2 b5 2.g4 b4 3.g5 b3 4.g6 b2 5.g7 bxc1=B 6.gxf8=S Ba3 7.Se6 Bf8 8.Sa3 dxe6 9.0-0-0 Qd7

Thematic square: f8
 Thematic pieces: Pronkin bB, Ceriani-Frolkin wS
 White queen-side castling

PG9,0 From diagram B (10+8) C?

H23d



1.Rb6 a×b6 2.f4 b5 3.Qf3 b4 4.Sb5 Sg4 5.a4 h5 6.a5 h4
7.a6 h3 8.a7 h2 9.a8=R h1=Q 10.Ra2 Qh8 11.Sh3 Qc3+
12.d×c3 Bc5 13.Rh2 Re7 14.Rh1 Qe8

Thematic square: h1

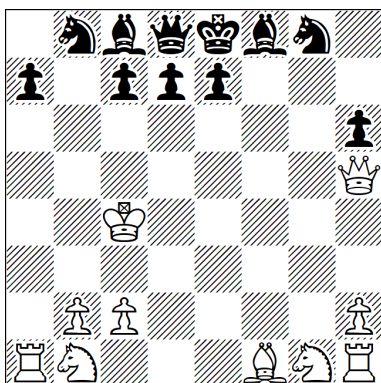
Thematic pieces: Pronkin wR, Ceriani-Frolkin bQ

8 promotions to 7 different pieces (wB/bB, wQ/bS,
bB/wS, wR/bQ) including white AUW.

Black 0-0 in phase A and white 0-0-0 in phase C.

PG14,0 From diagram C (9+7) C?

H24



1.a4 f5 2.a5 f4 3.a6 f3 4.a×b7 f×e2 5.b×a8=B e×f1=R+
6.Ke2 R×f2+ 7.Kd3 R×d2+ 8.Kc4 R×g2 9.B×g2 h5 10.Bf1
Rh6 11.B×h6 g×h6 12.Q×h5‡

Thematic square: f1

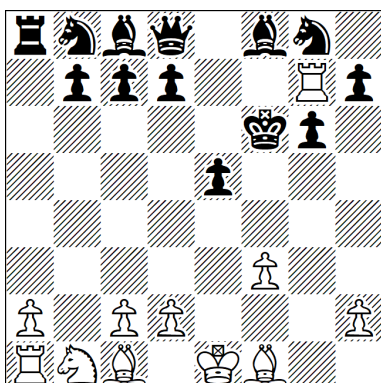
Thematic pieces: wB, promoted bR

Both siblings of the thematic bR are captured

Impostor bPh6

PG11,5 (10+11) C+

H25



1.f4 a5 2.f5 a4 3.f6 a3 4.f×g7 a×b2 5.g×h8=B b×c1=S
6.Bb2 S×e2 7.Bc1 S×g1 8.Qh5 Sf3+ 9.g×f3 e5 10.Rg1
Ke7 11.Rg7 Kf6 12.Qg6+ f×g6

Thematic square: c1

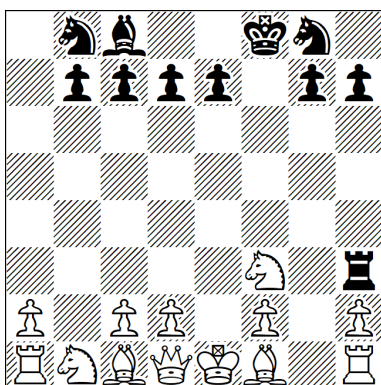
Thematic pieces: wB, promoted bS

Impostor pawns: wPf3 and bPg6

Pins and unpins

PG12,0 (11+13) C+

H26



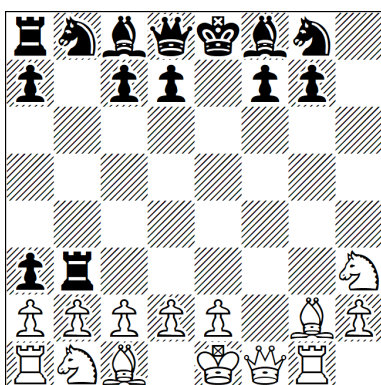
1. b4 f5 2. b5 f4 3. b6 f3 4. bxa7 f×g2 5. a×b8=S Ra3 6. Sc6 Rh3 7. Sf3 g1=S 8. S×d8 S×e2 9. Sf7 Sd4 10. S×h8 Sc6 11. Sg6 Sb8 12. S×f8 K×f8

One Ceriani-Frolkin (promoted on b8) and one Pronkin (promoted on g1); the C-F piece (white knight) performs a long journey thus surviving 6 moves before being captured.

PG12,0

(13+11) C+

H27



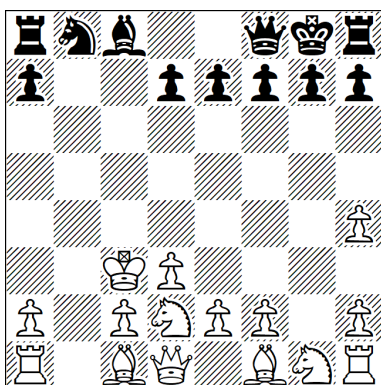
1. f4 h5 2. f5 h4 3. f6 h3 4. f×e7 h×g2 5. e×f8=B Rh3 6. Ba3 Rb3 7. Sh3 g1=B 8. Bg2 Bc5 9. Rg1 Bf8 10. Kf2 b5 11. Qf1 b4 12. Ke1 b×a3

bB Pronkin, wB Ceriani-Frolkin.

PG12,0

(14+14) C+

H28



1. b4 Sh6 2. b5 Sf5 3. b6 Sh4 4. b×c7 b5 5. d3 b4 6. Kd2 b3 7. Kc3 b2 8. Sd2 b1=Q 9. c×d8=S Qb6 10. Se6 Qd8 11. S×f8 K×f8 12. g3 Kg8 13. g×h4 Qf8

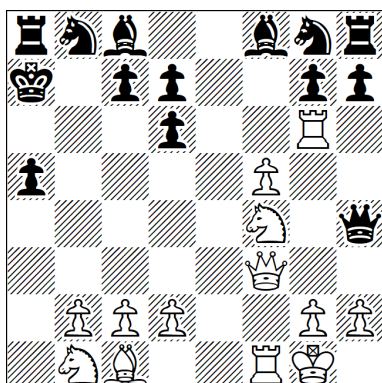
Thematic square: d8.

Thematic pieces: black queen, white promoted knight.

PG13,0

(15+12) C+

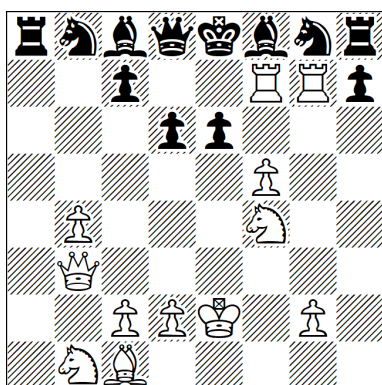
H29a



1.a4 f5 2.a5 f4 3.a6 f3 4.a×b7 f×e2 5.Ra6 e×f1=B 6.Rg6 a5 7.b×c8=S Ba6 8.Sd6+ e×d6 9.Se2 Qh4 10.0-0 Kd8 11.f4 Kc8 12.f5 Kb7 13.Sf4 Ka7 14.Qf3 Bc8

PG14,0 (13+14) C+

H29b

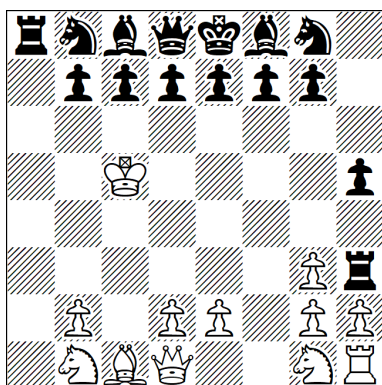


1.b4 Ba6 2.Qb3 Kb7 3.Re1 Kc8 4.Re7 Kd8 5.Rf7 Bc8 6.Kf1 Ke8 7.Ke2 Qd8 8.h4 a4 9.h5 a3 10.h6 a2 11.h×g7 a1=B 12.g×f8=S Bg7 13.S8e6 Bf8 14.Rgg7 d×e6

The theme squares c8 and f8 are promotion squares for two Ceriani-Frolkin knights and destination squares for two Pronkin bishops.

PG14,0 From diagram A (12+12) C?

H30



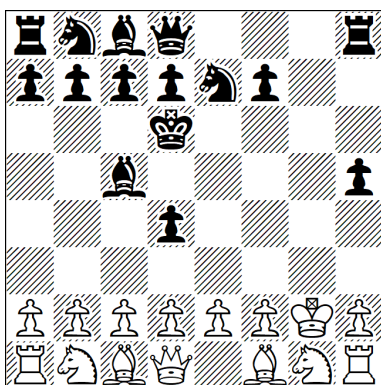
1.a4 a5 2.Ra3 Ra6 3.Rb3 Rh6 4.Rb4 a×b4 5.a5 b3 6.a6 b×c2 7.a7 c×d1=S 8.a8=Q Se3 9.Qa4 S×f1 10.Qd1 Sg3 11.f×g3 Rh3 12.Kf2 h5 13.Ke3 Rh6 14.Kd4 Ra6 15.Kc5 Ra8

Thematic square: d1.
Thematic pieces: white queen, black promoted knight.

Additional feature: Impostor (Ra8).

PG15,0 (12+15) C+

H31



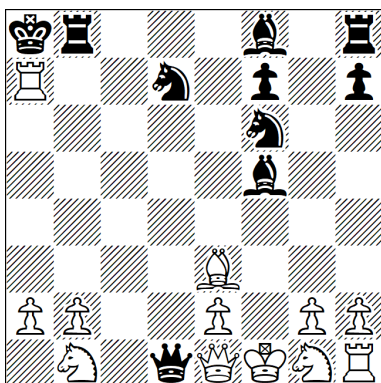
1.g4 h5 2.g5 Rh6 3.g×h6 g5 4.h7 g4 5.h8=B g3 6.Bc3 e5
7.Bh3 Bc5 8.Kf1 Ke7 9.Kg2 Kd6 10.Kf3 Se7 11.Bf1 g2
12.Sh3 g1=R 13.Bd4 Rg8 14.Sg1 Rh8 15.Kg2 e×d4

Minimum realisation with only thematic captures;
switchbacks performed by all active white pieces.

PG15,0

(15+15) C+

H32



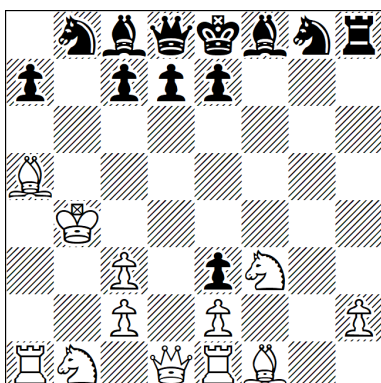
1.f4 d5 2.f5 d4 3.f6 d3 4.f×g7 Sf6 5.g8=S d×c2 6.S×e7
c×b1=S 7.Sd5 S×d2 8.Sc3 S×f1 9.K×f1 Bf5 10.Qe1 Qd1
11.Be3 Sbd7 12.Rc1 0-0-0 13.Sb1 Kb8 14.R×c7 Ka8
15.R×b7 Rb8 16.R×a7‡

Thematic square: b1
Thematic pieces: wS, promoted bS
Pseudo-Bristol
Umnov × 4

PG15,5

(12+10) C+

H33



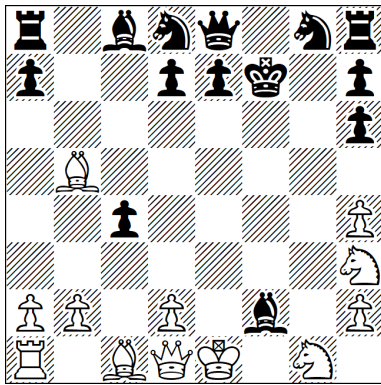
1.a4 h5 2.a5 h4 3.a6 h3 4.a×b7 h×g2 5.b×a8=B g×f1=S
6.Bg2 Se3 7.d×e3 g5 8.Bd2 g4 9.Ba5 g3 10.Kd2 g×f2
11.Kc3 f1=Q 12.Kb4 Qf6 13.Sf3 Qc3+ 14.b×c3 f5 15.Re1
f4 16.Bf1 f×e3

Thematic square f1 with Ceriani-Frolkin (bQ + bS) and
Pronkin (wB). One Ceriani-Frolkin is hidden: neither the
captured nor the capturing piece is on the diagram.

PG16,0

(12+12) C+

H34

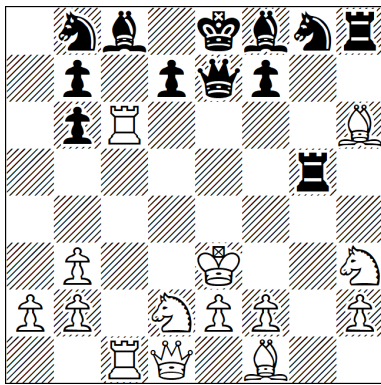


1.c4 f5 2.c5 f4 3.c6 f3 4.c×b7 Sc6 5.b8=Q f×e2
6.Qbb3 e×d1=B 7.Bb5 Bg4 8.Qd1 Bh3 9.g×h3
Kf7 10.h4 Qe8 11.Sh3 Sd8 12.Rg1 c5 13.Rg6
c4 14.Rh6 g×h6 15.Sc3 Bg7 16.Se2 Bd4
17.Seg1 B×f2+

1.c4 f5 2.c5 f4 3.c6 f3 4.c×b7 Sc6 5.b8=Q f×e2
6.Qbb3 e×d1=S 7.Bb5 S×f2 8.Qd1 Sh3 9.g×h3
Kf7 10.h4 Qe8 11.Sh3 Sd8 12.Rg1 c5 13.Rg6
c4 14.Rh6 g×h6 15.Sc3 Bg7 16.Se2 Bd4
17.Seg1 Bf2+

PG17,0 1.1.1.1.1.1.1.1.1.1.2.1.1... (12+14) C+

H35

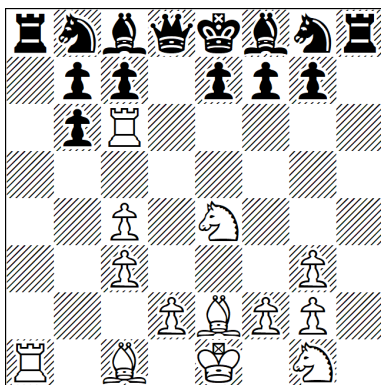


1.d4 h5 2.d5 h4 3.d6 h3 4.d×e7 h×g2 5.Sh3
g1=Q 6.e×d8=B Qg5 7.B×c7 Qd8 (Qe7?) 8.Bb6
a×b6 9.Rg1 Ra3 10.Rg6 Rb3 11.Rc6 g5
12.c×b3 g4 13.Bh6 g3 14.Kd2 g2 15.Ke3 g1=R
16.Sd2 Rg5 17.Rac1 Qe7+

False tracks: 7...Qc5?? and White cannot play
15.Ke3 or 7...Qh4? and bQ is interfered by
16...Rg5.

PG17,0 (14+12) C+

H36

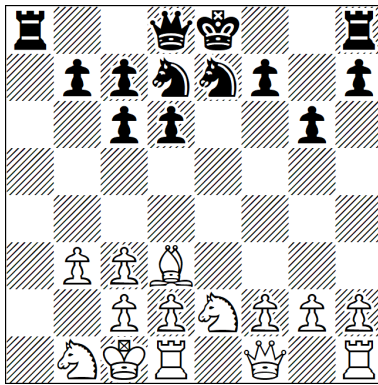


1.c4 d5 2.Qb3 d4 3.Qb6 a×b6 4.Sc3 Ra3 5.Se4
Rg3 6.h×g3 d3 7.Rh6 d×e2 8.Rc6 h5 9.a4 h4
10.a5 h3 11.a6 h2 12.a7 h1=R 13.a8=Q R1h5
14.Qa4 Ra5 15.Qd1 e×d1=S 16.Be2 Sc3
17.b×c3 Ra8

Double black and white thematic
combination with three pawns only: The
thematic square on White's side is d1 and on
Black's side is a8. Promoted wQ fulfils both
the Pronkin and the Ceriani-Frolkin effects.

PG17,0 (13+14) C+

H37



1.e4 g6 2.e5 Bg7 3.e6 Bc3 4.bxc3 a5 5.Ba3 a4 6.Bd6
exd6 7.e7 a3 8.exd8=S Se7 9.Sc6 dxc6 10.Bd3 Be6
11.Qe2 Bb3 12.axb3 a2 13.Sa3 Sd7 14.0-0-0 a1=Q+
15.Sb1 Qa7 16.Qf1 Qb8 17.Se2 Qd8

Thematic square: d8

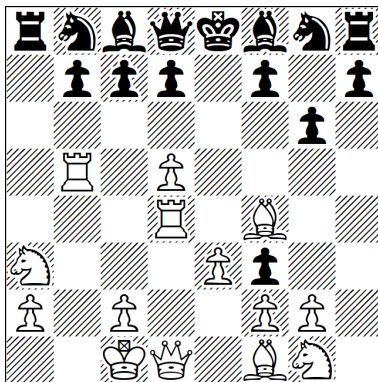
Thematic pieces: black queen, white promoted knight

wSb1 switchback

PG17,0

(14+13) C+

H38



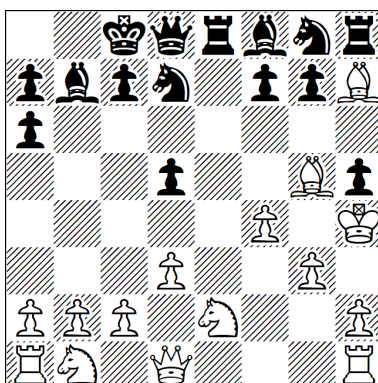
1.h4 Sh6 2.h5 Sf5 3.h6 g6 4.Rh5 Sg7 5.hxg7 a5 6.g8=S
a4 7.Sf6+ exf6 8.Rb5 f5 9.d4 f4 10.d5 f3 11.Bf4 a3
12.e3 axb2 13.Sa3 b1=S 14.Qe2 Sd2 15.0-0-0 Se4
16.Rd4 Sf6 17.Qd1 Sg8

To promote on g8, the easy and natural way is to capture the black knight there. However, the black knight has to move three times in order to allow the promotion on its home-square. Castling is hidden by the wQ switchback and the white rooks insinuating are interchanged.

PG17,0

(14+15) C+

H39



1.e4 d5 2.e5 Qd6 3.exd6 e5 4.d7+ Ke7 5.d8=R h5 6.Rd6
Sd7 7.Ra6 bxa6 8.Bd3 Bb7 9.Bh7 Re8 10.d3 Kd8
11.Bg5+ Kc8 12.f4 e4 13.Kf2 e3+ 14.Kg3 e2 15.Kh4
e1=Q+ 16.g3 Qe7 17.Se2 Qd8

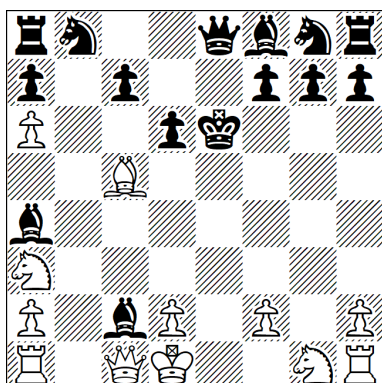
Ceriani-Frolkin piece: R

Pronkin piece: q

PG17,0

(15+15) C+

H40



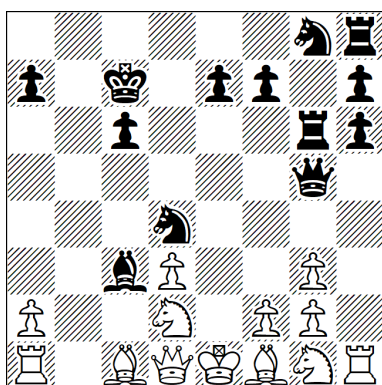
1.e3 e5 2.Be2 e4 3.Bf3 e×f3 4.e4 d6 5.e5 Bd7 6.e6 Ba4
7.e7 Kd7 8.e8=B+ Ke6 9.Bb5 f×g2 10.Bf1 g×f1=B 11.b4
Ba6 12.b5 Qe8 13.b×a6 b5 14.Ba3 b4 15.Qc1 b3 16.Bc5
b2 17.Sa3 b1=B 18.Kd1 Bb×c2+

3 promotions to light-square bishop; the Pronkin piece is itself captured, with the Ceriani-Frolkin piece replaced by a phoenix unit on b1.

PG18,0

(12+15) C+

H41



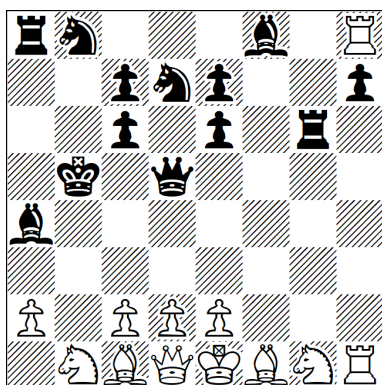
1.c4 d5 2.c5 d4 3.c6 d3 4.c×b7 d×e2 5.b×c8=B e×f1=S
6.Ba6 Sg3 7.h×g3 Sc6 8.Rh6 g×h6 9.Bf1 Bg7 10.d3 Bc3+
11.Sd2 Sd4 12.b4 c6 13.b5 Qa5 14.b6 0-0-0 15.b7+ Kc7
16.b8=R Rd6 17.Rb5 Rg6 18.Rh5 Qg5 19.Rh1

Ceriani-Frolkin piece: s
Pronkin pieces: B,R

PG18,5

(13+13) C+

H42



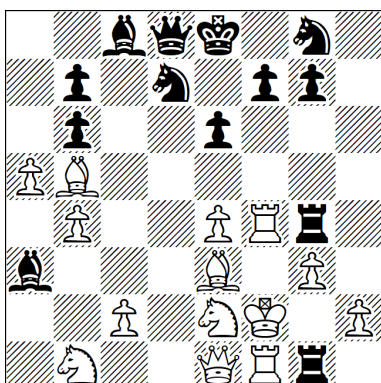
1.h4 a5 2.h5 a4 3.h6 a3 4.h×g7 a×b2 5.g×f8=S b×a1=B
6.Se6 d×e6 7.g4 Bd7 8.g5 Ba4 9.g6 Kd7 10.g×f7 Kc6
11.f8=Q Kb5 12.Qf3 Sf6 13.Qc6+ b×c6 14.f4 Qd5 15.f5
Sfd7 16.f6 Rg8 17.f7 Rg6 18.f8=R Bg7 19.Rh8 Bf8

Thematic square f8 with AUW: wQ + wS (Ceriani-Frolkin), bB (Pronkin) and wR (unthematic part on the thematic square).

PG19,0

(12+13) C+

H43



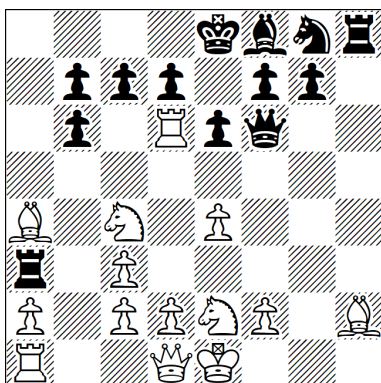
1.d4 h5 2.d5 h4 3.d6 h3 4.dxc7 hxcg2 5.cxd8=B Rh3 6.Bb6 Rg3 7.fxcg3 axb6 8.Kf2 Ra4 9.Qe1 Rg4 10.a4 d5 11.a5 d4 12.Ra4 d3 13.Rf4 d2 14.e4 d1=Q 15.Be3 Qd8 16.Bb5+ Sd7 17.Se2 e6 18.Rf1 Ba3 19.b4 g1=R

The promoted bQ returns to its original square by the shortest route – from square d1.

PG19,0

(14+13) C+

H44



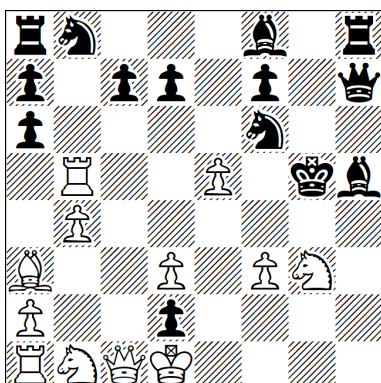
1.e4 Sf6 2.Bb5 Sd5 3.Se2 Sc3 4.bxc3 h5 5.Ba3 h4 6.Bd6 h3 7.Sa3 hxcg2 8.h4 g1=S 9.h5 Sh3 10.h6 Sf4 11.h7 Sd5 12.Rh6 Sf6 13.Bh2 Sg8 14.Rd6 e6 15.hxcg8=S Qf6 16.Se7 Sc6 17.Sxc8 Se7 18.Sb6 axb6 19.Sc4 Ra3 20.Ba4 Sg8

Thematic square g8 (Pronkin knight, Frolkin knight). Promoted Pronkin knight captured on thematic square g8. Sibling knight on thematic square g8 on diagram.

PG20,0

(14+13) C+

H45



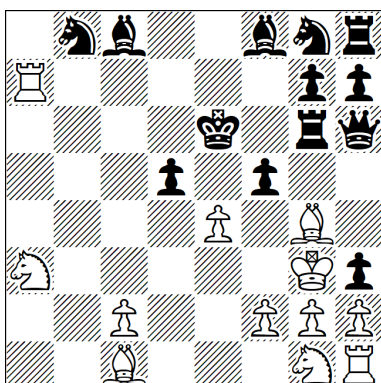
1.b4 h5 2.Ba3 h4 3.Qc1 h3 4.Kd1 hxcg2 5.h4 e5 6.h5 e4 7.h6 e3 8.Rh5 exd2 9.e4 Qh4 10.Ba6 Ke7 11.Rb5 Kf6 12.e5+ Kg5 13.hxcg7 Sf6 14.g8=B bxa6 15.Bh7 Bb7 16.Bd3 Qh7 17.Bf1 Bf3+ 18.Se2 Bh5 19.f3 gxf1=B 20.Sg3 Bd3 21.cxd3

Thematic square f1. The Phoenix-Pronkin piece and the Ceriani-Frolkin piece are of the same nature (bishop). Then the Pronkin piece is captured.

PG20,5

(12+14) C+

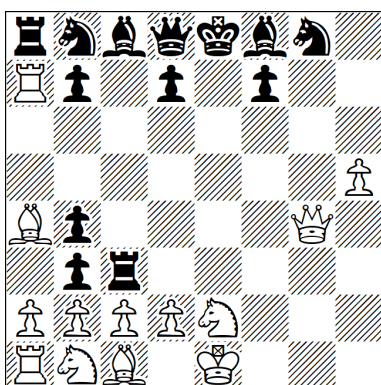
H46



1.d4 a5 2.d5 a4 3.d6 a3 4.dxc7 axb2 5.a4 d5 6.a5 Qd6
7.a6 Qh6 8.axb7 Ra6 9.bxc8=B Rg6 10.Bh3 f5 11.e4 Kf7
12.Qg4 fxg4 13.c8=B gxh3 14.Bf5 e6 15.Be2 exf5
16.Ra7+ Ke6 17.Sa3 b1=B 18.Bg4 Ba2 19.Ke2 Bc4+
20.Kf3 Ba6 21.Kg3 Bc8

PG21,0 (12+13) C+

H47

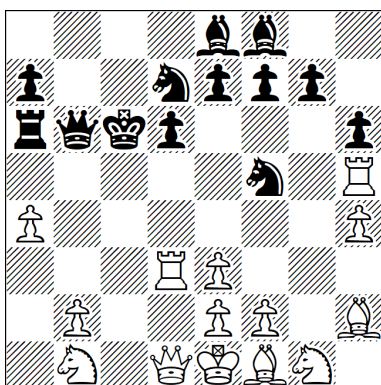


1.f4 h5 2.f5 h4 3.f6 h3 4.fxe7 hxg2 5.exf8=B Rh3 6.Bb4
Rc3 7.h4 c5 8.h5 cxb4 9.Rh4 b3 10.Ra4 g5 11.e4 g4
12.Bb5 g3 13.Qg4 a5 14.Se2 g1=B 15.e5 Bc5 16.e6 Bf8
17.e7 g2 18.exf8=B g1=B 19.Bb4 axb4 20.Ra7 Bc5
21.Ba4 Bf8

Thematic square: f8
Black double Pronkin bishops and white bishop promotions for Ceriani-Frolkin take place on f8. The bishops are captured on the same square b4.

PG21,0 (13+13) C+

H48



1.a4 b5 2.Ra3 b4 3.Rh3 b3 4.Rh5 bxc2 5.h4 cxb1=Q
6.Rh3 Qe4 7.Rd3 Qe3 8.dxe3 Sh6 9.Bd2 Sf5 10.Ba5 h6
11.Bxc7 Rh7 12.Bh2 d6 13.g4 Kd7 14.g5 Kc6 15.g6 Bd7
16.gxh7 Be8 17.h8=S Sd7 18.Sg6 Rb8 19.Sf4 Rb6
20.Sd5 Ra6 21.Sc3 Qb6 22.Sb1

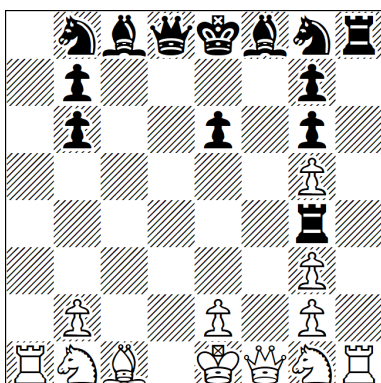
Thematic square: b1;
Thematic pieces: white knight, promoted black queen.

1.a4 b6 2.Ra3 b5 3.Rh3 b4 4.Rh5 b3 5.h4 bxc2 6.Rh3
cxd1=S 7.Rd3 Se3 8.dxe3 Sh6 9.Bd2 Sf5 10.Ba5 h6
11.Bxc7 Rh7 12.Bh2 d6 13.g4 Kd7 14.g5 Kc6 15.g6 Bd7
16.gxh7 Be8 17.h8=Q Sd7 18.Qh7 Rb8 19.Qg6 Rb6
20.Qe6 Ra6 21.Qb3 Qb6 22.Qd1

Thematic square: d1
Thematic pieces: white queen, promoted black knight.

PG21,5 1.2.1.1... (14+13) C+

H49



1.c4 e6 2.c5 Qg5 3.c6 Ke7 4.cxd7 c5 5.d8=B+ Ke8 6.Bb6 axb6 7.h4 Ra4 8.hxg5 Rg4 9.Rh6 c4 10.Rg6 h5 11.a4 h4 12.a5 h3 13.a6 h2 14.a7 h1=S 15.a8=R Sg3 16.R8a3 Sxf1 17.Rh3 Sg3 18.fxg3 c3 19.Kf2 cxd2 20.Qf1 d1=Q 21.Rh1 Qd8 22.Ke1 fxg6

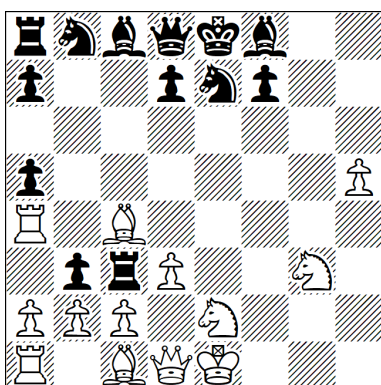
Thematic AUW blended with consistent switchbacks of both kings; additional switchback of the C-F knight.

FPG notation: CF(B,SW(s)) & PR(R,q) & SW(K,k).

PG22,0

(12+13) C+

H50



1.f4 h5 2.f5 h4 3.f6 h3 4.fxe7 hxg2 5.exf8=B Rh3 6.Bb4 Rc3 7.h4 c5 8.h5 cxb4 9.Rh4 b3 10.Ra4 g5 11.e4 g4 12.Bc4 g3 13.Se2 g1=B 14.e5 Bc5 15.e6 Bf8 16.e7 g2 17.exd8=B Se7 18.Ba5 b6 19.d3 bxa5 20.Sd2 g1=Q+ 21.Sf1 Qb6 22.Sfg3 Qd8

Thematic squares: d8, f8

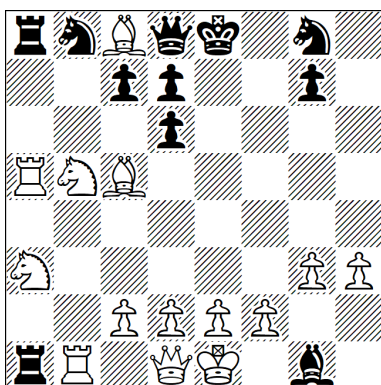
White Ceriani-Frolkin parts are realized by two bishops.

Analogous play.

PG22,0

(13+13) C+

H51



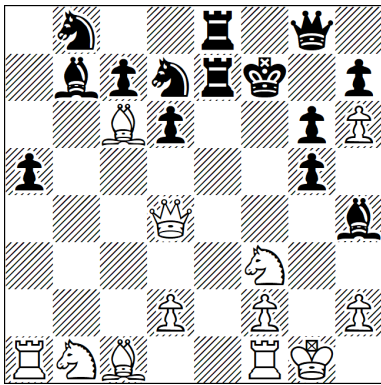
1.a4 f5 2.a5 f4 3.a6 f3 4.axb7 a5 5.bxc8=S a4 6.Sd6+ exd6 7.b4 Be7 8.b5 Bh4 9.b6 Bg3 10.hxg3 a3 11.Rh5 a2 12.Ra5 h5 13.Ba3 h4 14.Bc5 h3 15.Sa3 h2 16.Rb1 Rh3 17.gxh3 h1=B 18.Bg2 fxg2 19.Sf3 g1=B 20.Sd4 Bb7 21.Sdb5 Bc8 22.b7 a1=R 23.bxc8=B

The theme is performed by capturing the Bc8 at home in order to promote the CF piece, and capturing again the Pronkin bishop on c8 (Phantom). Systematic effect: Phoenix. The h1 promotion requests cross-captures on g3/h3 (black bishop and rook), who are re-born on g1/a1. The black bishop promotion requests the Bf1 to be sacrificed, who is thereafter re-born by capturing the Pronkin bishop on c8.

PG22,5

(14+11) C+

H52



PG23,0

(12+14) C+

1.g4 d5 2.Bg2 d4 3.Bc6+ Sd7 4.Sf3 d3 5.0-0 dxe2 6.a4 e1=S
7.a5 Sxc2 8.a6 Sb4 9.axb7 a5 10.b8=Q Sa6 11.Qb4 Sh6
12.Qd6 exd6 13.g5 Be7 14.gxh6 Bh4 15.Qc2 g5 16.Qg6
fxg6 17.b4 Kf7 18.b5 Re8 19.b6 Re7 20.b7 Qg8 21.b8=Q
Bb7 22.Qa7 Rae8 23.Qd4 Sab8

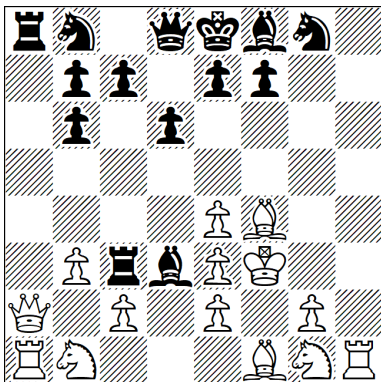
Thematic square: b8

Thematic pieces: bS, promoted wQ (an original combination)

The thematic white queen is captured by an impostor pawn. One more wQ promotes on the thematic square, after the original wQ is captured (Phoenix theme).

[Sb8] and [Pd7] exchange their places.

H53



PG23,0

(14+14) C+

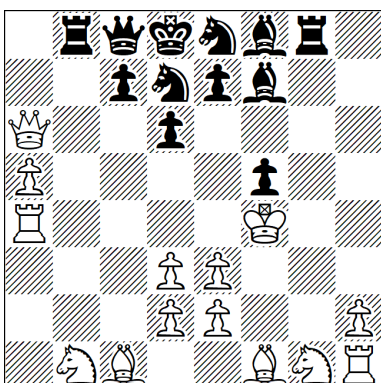
1.h4 g5 2.Rh3 gxh4 3.Rb3 h3 4.Rb6 axb6 5.f3 Ra3 6.Kf2 Rc3
7.a4 h2 8.a5 h1=Q 9.a6 Qh6 10.a7 Qe3+ 11.dxe3 h5 12.Qd5
h4 13.Qa2 h3 14.b3 h2 15.Ba3 h1=Q 16.Bd6 Qh7 17.Bf4 d6
18.a8=R Bf5 19.Ra5 Bd3 20.Rh5 Qe4 21.Rh1 Rh5 22.fxe4
Ra5 23.Kf3 Ra8

Thematic square: h1

Thematic pieces: wR, two promoted bQ

Both promotion squares are occupied by home base/non-home circuit pieces.

H54



PG23,5

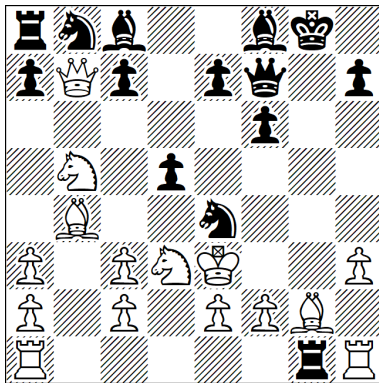
(14+12) C+

1.b4 f5 2.b5 Sf6 3.b6 Rg8 4.bxa7 b5 5.g4 b4 6.g5 b3 7.g6 b2
8.gxh7 bxc1=S 9.h8=B Sd3+ 10.cxd3 g5 11.Qa4 g4 12.Qa6
g3 13.a4 g2 14.a5 gxh7=S 15.Ra4 Se3 16.fxe3 d6 17.Kf2 Be6
18.Kf3 Sbd7 19.Kf4 Rb8 20.a8=B Qc8 21.Bg2 Kd8 22.Bf1 Se8
23.Bb2 Bf7 24.Bc1

Pronkin (B,B), Ceriani-Frolkin (s,s), PG of the future.

Longer but more symmetric than Silvio Baier, Schach 2011
srbqk1r1/2p1pp2/3p3c/8/5b2/3PP2Q/P1KSP1P/2B1RBSR
PG in 21.5: 1.g4 d6 2.g5 Sd7 3.g6 Rb8 4.gxh7 g5 5.b4 g4
6.b5 g3 7.b6 g2 8.bxa7 gxh7=S 9.a8=B Se3 10.dxe3 b5
11.Kd2 b4 12.Qf1 b3 13.Qh3 b2 14.Bg2 bxc1=S 15.Bf1 Sd3
16.cxd3 Bh6 17.Kc2 Bf4 18.Sd2 Sh6 19.Re1 Rg8 20.h8=B
Sb6 21.Bb2 Sa8 22.Bc1

H55

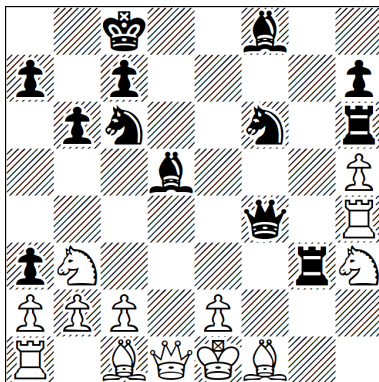


1.Sh3 g5 2.Sf4 g4 3.h3 g3 4.Rh2 g×h2 5.g4 h1=Q 6.g5 Qf3 7.g6 Qa3 8.b×a3 b5 9.Bb2 b4 10.Bc3 b3 11.Bb4 b2 12.Sc3 b1=S 13.Sb5 Sc3 14.d×c3 Sf6 15.Kd2 Se4+ 16.Ke3 f6 17.g7 Kf7 18.g8=R Qe8 19.Rg1 Rg8 20.Rh1 Rg1 21.Bg2 Kg8 22.Qd5+ Qf7 23.Qb7 d5 24.Sd3

Ceriani-Frolkin pieces: q,s
Pronkin piece: R

PG23,5 (15+14) C+

H56



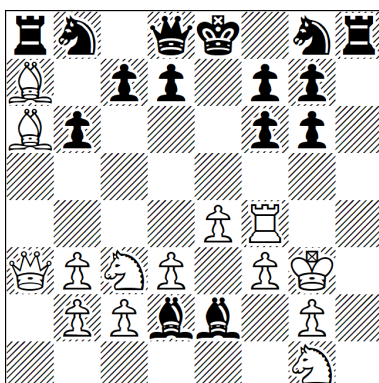
1.d4 b6 2.d5 Bb7 3.d6 Bd5 4.d×e7 Sc6 5.e×f8=B Qh4 6.g4 0-0-0 7.g5 Re8 8.g6 Re6 9.g×f7 g5 10.Ba3 g4 11.f8=B g3 12.f4 Rh6 13.f5 Qf4 14.f6 g2 15.f7 Sf6 16.Bfb4 Rg8 17.f8=B Rg3 18.Bfc5 d6 19.h4 d×c5 20.h5 c×b4 21.Rh4 b×a3 22.Sh3 g1=B 23.Sd2 Bc5 24.Sb3 Bf8

Thematic square: f8

Thematic pieces: black bishop, three white promoted bishops

PG24,0 (13+13) C+

H57



1.h4 a5 2.Rh3 Ra6 3.Rg3 Rb6 4.Rg6 Rb3 5.a×b3 h×g6 6.Ra4 Rh5 7.Rf4 a4 8.e4 Ra5 9.h5 Ra8 10.Ba6 a3 11.d3 a2 12.Be3 a1=R 13.Ba7 b6 14.h6 Bb7 15.h7 Bd5 16.h8=Q Be6 17.Qh4 Bg4 18.Qf6 Be2 19.f3 e×f6 20.Kf2 Bb4 21.Kg3 Bd2 22.Sc3 Ra5 23.Qa1 Rh5 24.Qa3 Rh8

Thematic square: h8

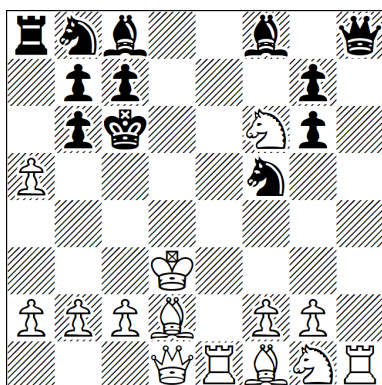
Thematic pieces: black rook, white promoted queen.

Both diagrammed bRs are impostors.

Partial computer testing: Jacobi, in heuristic mode, finds the full-length solution and no other (60 hours).

PG24,0 (14+15) C?

H58



1.e4 d5 2.e5 Kd7 3.e6+ Kc6 4.exf7 e5 5.Sc3 Bb4 6.f8=S
Se7 7.Sg6 h×g6 8.Se4 Rh3 9.Sf6 Rc3 10.d×c3 e4 11.Qd4
e3 12.Qb6+ a×b6 13.h4 d4 14.h5 d3 15.h6 d2+ 16.Ke2
d1=R 17.h7 Rd5 18.h8=Q Rda5 19.Qh5 Qh8 20.Kd3 e2
21.c×b4 e1=B 22.b×a5 Bb4 23.Bd2 Sf5 24.Re1 Bf8
25.Qd1

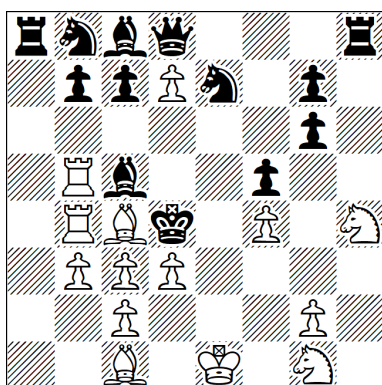
Thematic squares: d1, f8

Thematic pieces: white queen, black bishop,
white promoted knight, black promoted rook

PG24,5

(14+12) C+

H59



1.e4 f5 2.Qg4 Kf7 3.Qg6+ h×g6 4.e5 Rh3 5.e6+ Kf6
6.e×d7 Rb3 7.a×b3 e5 8.Ra5 Bc5 9.Rb5 a5 10.h4 a4
11.h5 a3 12.h6 a2 13.h7 a1=R 14.h8=Q R1a4 15.Qh5
Rh4 16.Qd1 Rh8 17.Rh4 Se7 18.Rhb4 e4 19.Bc4 e3
20.d3 e2 21.Sd2 e×d1=S 22.Sdf3 Sc3 23.Sh4 Ke5 24.f4+
Kd4 25.b×c3+

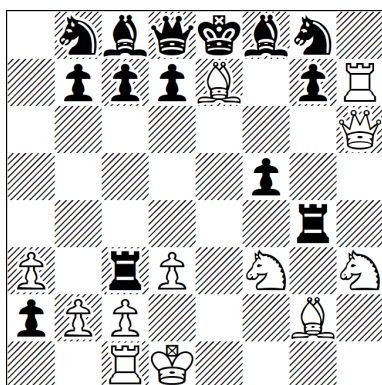
The required theme is shown twice.

On square d1: wQ Pronkin, bS Ceriani-Frolkin.
On square h8: bR Pronkin, wQ Ceriani-Frolkin.

PG24,5

(14+13) C+

H60



1.d3 h5 2.Bg5 h4 3.Qc1 h3 4.Kd1 h×g2 5.h4 e5 6.h5 e4
7.h6 e3 8.h7 e×f2 9.h×g8=B Rh4 10.e4 Rg4 11.Rh7 a5
12.Sh3 g1=B 13.Bg2 f1=S 14.e5 Sg3 15.e6 Sf5 16.e7 Sh6
17.e×f8=B f5 18.Bb4 a×b4 19.Sd2 Ra3 20.Sf3 Rc3 21.a3
Bc5 22.Ba2 Bf8 23.Be7 Sg8 24.Qh6 b3 25.Rc1 b×a2

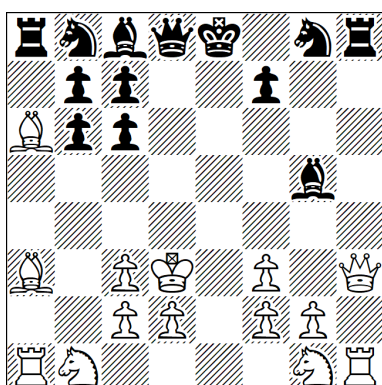
The stipulated theme is doubled. The black original
pieces are captured on their initial game array squares,
so a conclusion on the proof game can only be drawn
from the black pawns in the diagram. Here, a single
Zig-Zag pawn (so it's on its original file) ensures that all
promotions are necessary.

PG25,0

(12+14) C+

FPG notation: (ZZ & CF)(B,B) & PR(b,s)

H61



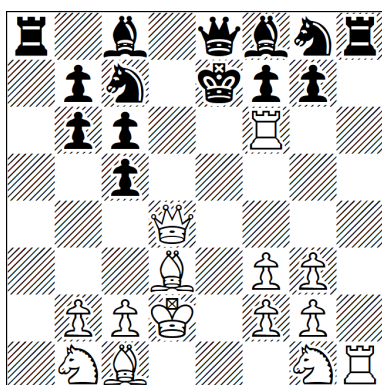
PG25,0

(14+13) C+

1.h4 e5 2.h5 Be7 3.h6 Bg5 4.h×g7 Se7 5.Rh6 Rf8 6.Rb6 a×b6 7.g8=R Ra3 8.Rh8 Rf3 9.a4 h5 10.a5 h4 11.a6 h3 12.a7 h2 13.a8=Q h1=R 14.Qa4 Rh4 15.Qc6 Ra4 16.e×f3 Ra8 17.Ba6 e4 18.Ke2 e3 19.Kd3 e2 20.Rh1 e1=Q 21.Qe2 Rh8 22.Qee6 Qe5 23.Qh3 Qc3+ 24.b×c3 Sg8 25.Ba3 d×c6+

Thematic square a8 (Pronkin rook, Frolkin queen).
Extra Pronkin rook h1 (promoted on g8).
Extra Frolkin queen (promoted on e1, captured on c3).
Switchback of black Rh8 and Sg8.

H62



PG25,0

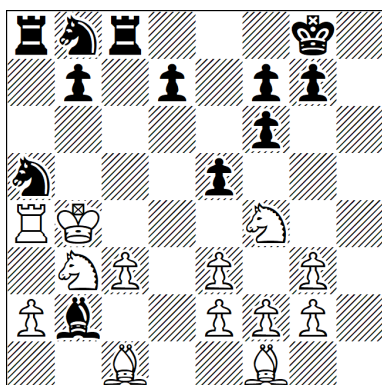
(14+14) C+

1.a4 e5 2.Ra3 e4 3.Rb3 e3 4.Rb6 a×b6 5.d4 Ra5 6.d5 Sa6 7.d6 Rg5 8.a5 Rg3 9.h×g3 c5 10.Rh6 Sc7 11.Rf6 h5 12.a6 h4 13.a7 h3 14.a8=Q h2 15.Qa4 h1=Q 16.Qc6 d×c6 17.d7+ Ke7 18.Qd4 Qe8 19.d8=R Qh5 20.Rd5 Qf3 21.e×f3 e2 22.Kd2 e1=R 23.Rh5 Re3 24.Rh1 Ra3 25.Bd3 Ra8

Thematic squares h1 and a8
Thematic pieces:
h1: white rook, black promoted queen
a8: black rook, white promoted queen

All thematic moves are geometrically symmetric with respect to the centre of the chessboard.

H63



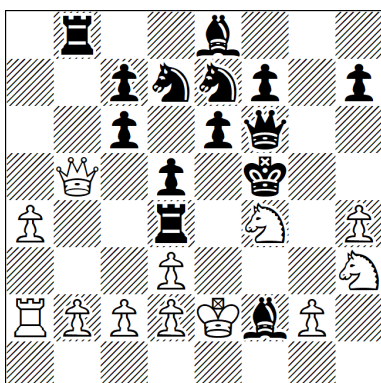
PG25,5

(13+12) C+

1.b3 a5 2.b4 Ra6 3.b×a5 Rg6 4.a6 Rg3 5.h×g3 h6 6.Rh4 h5 7.Ra4 h4 8.a7 h3 9.a8=S h2 10.Sb6 h1=R 11.S×c8 R1h5 12.Sd6+ c×d6 13.Sh3 Qb6 14.Sf4 Qe3 15.d×e3 Ra5 16.Qd4 Ra8 17.Qf6 e×f6 18.Sd2 Se7 19.Rb1 Sec6 20.Rb5 Sa5 21.Re5+ d×e5 22.Sb3 Ba3 23.Kd2 0-0 24.Kc3 Bb2+ 25.Kb4 Rc8 26.c3

- ZZ try 1: 1.b4? 2 a5 2.b×a5 Ra6 ZZ 3.c3? closes the king path from e1 to b4.
- ZZ try 2: 5...h5? 6.Rh4 ZZ 6...Rh6 7.Ra4 h4 8.a7 Ra6 9.a8=S h3 10.Sb6 h2 11.S×c8 h1=R 12.Sd6+ c×d6 13.Sh3 Qb6 14.Sf4 Qe3 15.d×e3 Rh8 16.Qd4 Ra8 leads to the same position as in main line, but Black cannot castle.

H64

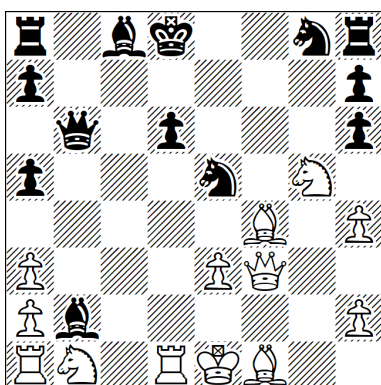


1.h4 a5 2.Rh3 a4 3.Rb3 a×b3 4.a4 e6 5.Ra2 b×a2 6.f4 a1=S 7.f5 Sb3 8.f6 S×c1 9.f×g7 Sd3+ 10.e×d3 Ke7 11.Qh5 Kf6 12.Qb5 Bc5 13.Be2 Kf5 14.Bf3 Qf6 15.Bc6 Se7 16.g8=R b×c6 17.Rg3 Rg8 18.Sc3 Rg4 19.Sd5 Bf2+ 20.Ke2 Rd4 21.Sf4+ d5 22.Rh3 Bd7 23.Rh1 Be8 24.Sgh3 Sd7 25.Ra1 Rb8 26.Ra2

Pronkin: Ra1 and Rh1
 Ceriani-Frolkin: a1=S
 The promoted rook occupies and vacates both Pronkin-squares.

PG25,5 (12+14) C?

H65

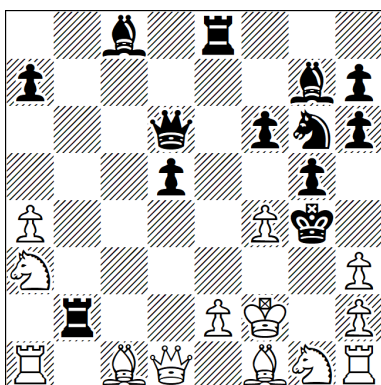


1.d4 f5 2.d5 f4 3.d6 f3 4.d×c7 d6 5.Bf4 Bh3 6.c8=Q Sc6 7.Qe6 Qb6 8.Qh6 e5 9.g×h3 e4 10.h4 e3 11.Sh3 e×f2+ 12.Kd2 g×h6 13.e3 Bg7 14.Ba6 f1=B 15.Sg5 f2 16.Qf3 Bh3 17.Rd1 f1=Q 18.c4 Qd3+ 19.Ke1 Qa3 20.b×a3 Bb2 21.c5 Se5 22.c6 b×a6 23.c7 a5 24.c8=B Kd8 25.Ba6 Bc8 26.Bf1

Theme × 2 with 4 promotions concentrated on two thematic squares:
 square f1 (return wB Pronkin, promotion bQ Ceriani-Frolkin)=requested theme+promotion bB Pronkin!
 square c8 (return bB Pronkin, promotion wQ Ceriani-Frolkin)=requested theme+promotion wB Pronkin!
 White-black echo. Switchback by wK.
 Future notation CF(Q,q) & PR(B,b).

PG25,5 (13+13) C+

H66

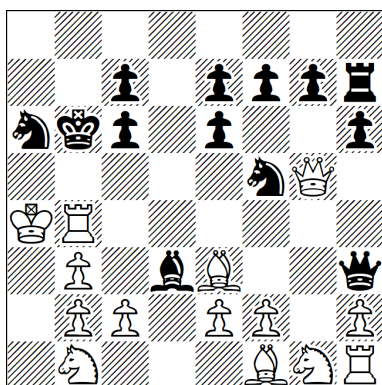


1.b4 Sc6 2.b5 Rb8 3.b×c6 b5 4.d4 b4 5.d5 b3 6.d6 b2 7.d×c7 d5 8.a4 Bh3 9.Sa3 b1=B 10.c8=Q Rb2 11.Qe6 Qd6 12.Qh6 g×h6 13.c7 Kd7 14.c4 Ke6 15.c5 Kf5 16.c6 Kg4 17.c8=Q+ Bf5 18.Qe6 Bg7 19.Qf6 e×f6 20.c7 Se7 21.c8=Q Re8 22.Qcc2 Bc8 23.Qg6+ f×g6 24.f4 g5 25.Kf2 Sg6 26.g×h3+

Pronkin: Bc8
 Ceriani-Frolkin: 3 x c8=Q

PG25,5 (13+13) C+

H67



PG25,5

(14+13) C+

1.g3 Sh6 2.g4 Sf5 3.g5 h6 4.g6 Rh7 5.g×h7 a5 6.h8=S
Ra6 7.Sg6 Rb6 8.S×f8 Rb3 9.Se6 d×e6 10.a×b3 Qd3
11.Ra4 Qh3 12.d4 Kd7 13.Qd2 Kc6 14.d5+ Kb6 15.Rd4
a4 16.d6 a3 17.d7 a2 18.d8=S a1=R 19.Sc6 b×c6 20.Qg5
Ba6 21.Kd2 Bd3 22.Kc3 Ra8 23.Kb4 Sa6+ 24.Ka4 Rh8
25.Be3 Rh7 26.Rb4‡

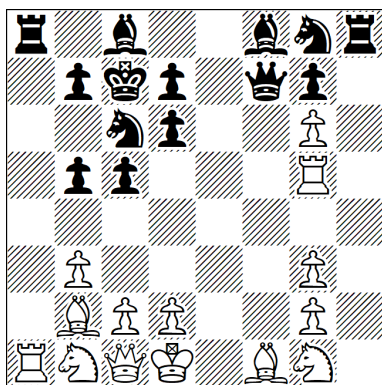
2 × Ceriani-Frolkin on h8, d8.

2 × Pronkin on a8, h8.

The same promoted piece moves to 2 Pronkin squares (a8, h8).

False is 1.g4? Sh6 2.g5 Sf5 3.g6 h6 4.???

H68



PG25,5

(14+14) C+

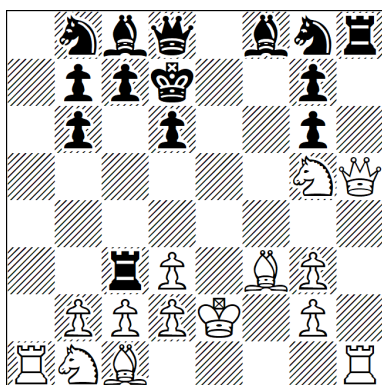
1.e4 a6 2.Bb5 a×b5 3.f4 Ra6 4.f5 Rg6 5.f×g6 f5 6.b3 f4
7.Bb2 f3 8.Qc1 f2+ 9.Kd1 f1=S 10.a4 Sg3 11.h×g3 c5
12.Rh5 Sc6 13.Rg5 h5 14.a5 h4 15.a6 h3 16.a7 h2
17.a8=Q h1=R 18.Qb8 R1h4 19.Qd6 e×d6 20.e5 Qf6
21.e6 Kd8 22.e7+ Kc7 23.e8=B Ra4 24.Bf7 Ra8 25.Bc4
Qf7 26.Bf1

AUW.

Theme × 2 in economical form (only the minimum of captures requested for this: 4) Very economical number of moves under these constraints.

Future notation CF(Q,s) & PR(B,r).

H69



PG26,0

(14+14) C+

1.f4 e6 2.f5 Bd6 3.f6 Bg3+ 4.h×g3 d6 5.Rh6 Kd7 6.Rg6
f×g6 7.f7 h5 8.f8=Q h4 9.Qf2 h3 10.Qb6 a×b6 11.Sf3
Ra3 12.Sg5 Rc3 13.a4 h2 14.a5 h1=S 15.a6 Sf2 16.a7
Sd3+ 17.e×d3 e5 18.Qh5 e4 19.Be2 e3 20.Bf3 e2 21.Kf2
e1=B+ 22.Ke2 Bf2 23.a8=R Bd4 24.R8a4 Bf6 25.Rh4 Be7
26.Rh1 Bf8

Thematic squares h1 and f8

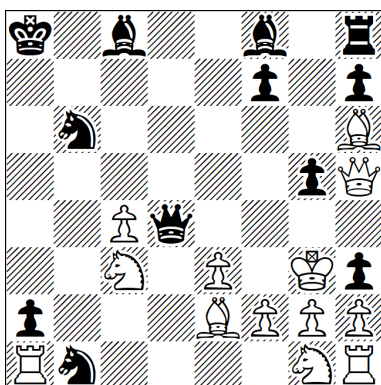
Thematic pieces:

h1: white rook, black promoted knight

f8: black bishop, white promoted queen

AUW

H70



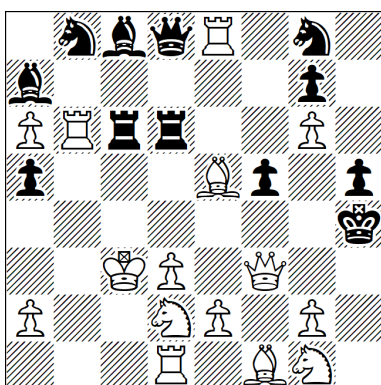
PG27,0

(13+12) C+

1.d4 Sf6 2.d5 Se4 3.d6 Sd2 4.dxc7 d5 5.a4 d4 6.a5 d3
7.a6 Qd4 8.axb7 a5 9.bxc8=B a4 10.Bh3 a3 11.c8=B a2
12.Bcg4 Sd7 13.b4 0-0-0 14.b5 Kb8 15.b6 Rc8 16.b7
Sb6 17.bxc8=B Ka8 18.Bcf5 e6 19.c4 exf5 20.Sc3 Sb1
21.Bh6 fxg4 22.e3 gxh3 23.Qh5 d2+ 24.Ke2 g5 25.Kf3
d1=B+ 26.Kg3 Bg4 27.Be2 Bc8

Thematic square c8 with 3 × Ceriani-Frolkin (wB + wB + wB) and Pronkin (bB).

H71



PG28,0

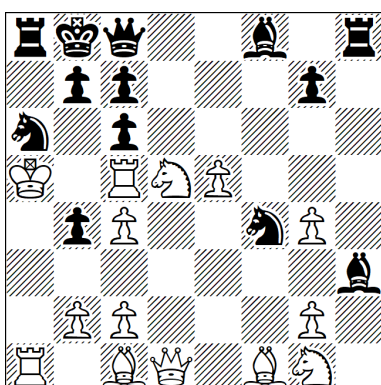
(15+12) C?

1.b4 a5 2.b5 Ra6 3.bxa6 b5 4.f4 b4 5.f5 b3 6.f6 b2
7.fxex7 f5 8.h4 Kf7 9.e8=R Qg5 10.hxg5 Bc5 11.Rh6 Ba7
12.Rb6 h5 13.c4 Rh6 14.Qb3 Rd6 15.g6+ Kf6 16.Qf3
Kg5 17.d3+ Kh4 18.Sd2 b1=Q 19.c5 Qb2 20.c6 Qf6
21.cxd7 c5 22.Bb2 c4 23.Be5 c3 24.0-0-0 c2 25.Kb2
c1=R 26.d8=S Rc7 27.Sc6 Qd8 28.Kc3 Rcxc6+

Thematic square d8, with a Ceriani-Frolkin knight, captured in Prentos style. In addition, the pc7 makes a circuit, becoming the Phoenix rook.

It is obvious that the last move is Rc7×Xc6+. It is then easily verified that X can only be a knight. The problem is C+ up to 28.Kc3 inclusive, so it is HC+ (human-computer+) for 28 complete moves.

H72



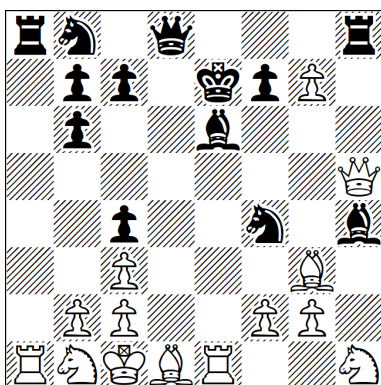
PG29,5

(14+13) C+

1.f4 Sf6 2.f5 Sh5 3.f6 a6 4.fxe7 f5 5.e4 f4 6.Bb5 f3 7.d3
f2+ 8.Kd2 f1=S+ 9.Kc3 Sfg3 10.hxg3 Sf4 11.Rh5 axb5
12.Rc5 Ra4 13.e5 Rc4+ 14.dxc4 h5 15.a4 h4 16.a5 h3
17.a6 h2 18.a7 h1=R 19.a8=Q R1h6 20.Qa4 Ra6 21.Kb4
Ra8 22.Sc3 Sa6+ 23.Ka5 b4 24.Qc6 dxc6 25.Sd5 Bh3
26.g4 Kd7 27.e8=B+ Kc8 28.Bg6 Kb8 29.Bd3 Qc8 30.Bf1

Double theme presentation. AUW with Ceriani-Frolkin and Pronkin elements presented by both sides.

H73



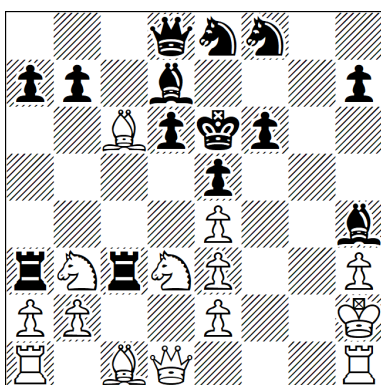
PG29,5

(14+13) C+

1.e4 d5 2.e5 Qd6 3.e×d6 e5 4.h4 Se7 5.h5 Sg6 6.h6 Be7
 7.h×g7 h5 8.Se2 h4 9.Sg3 h3 10.Qh5 Bh4 11.d7+ Ke7
 12.d8=R e4 13.Rd6 e3 14.Rb6 a×b6 15.Be2 Ra3 16.Bd1
 Rc3 17.d×c3 e2 18.Bf4 h2 19.Kd2 e1=R 20.a4 Re4
 21.Re1 h1=Q 22.a5 Qh3 23.a6 Qd7 24.a7 Qd8 25.a8=Q
 Be6 26.Qa2 Ra4 27.Sh1 Ra8 28.Bg3 Sf4 29.Qc4 d×c4+
 30.Kc1

Reciprocal change of thematic elements on a8 and d8:
 Ceriani-Frolkin queen and Pronkin rook on a8 vs.
 Pronkin queen and Ceriani-Frolkin rook on d8.

H74



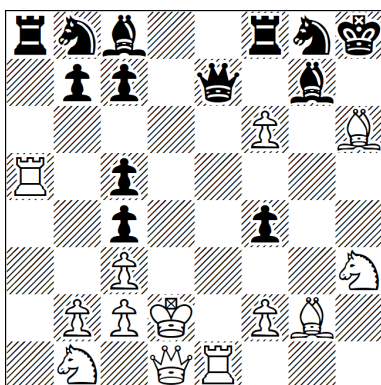
PG29,5

(14+14) C+

1.Sh3 g5 2.Sf4 g4 3.h3 g3 4.Rh2 g×h2 5.g4 e5 6.g5 Be7
 7.g6 Bh4 8.g7 Sf6 9.g8=R+ Ke7 10.Rg1 Rg8 11.Bg2 Rg3
 12.Kf1 Ra3 13.d3 c5 14.Sd2 c4 15.Sb3 c3 16.Qd2 c×d2
 17.c4 d6 18.c5 Sbd7 19.c6 Sf8 20.c7 Bd7 21.c8=Q d1=S
 22.Qc2 Se3+ 23.f×e3 Rc8 24.Qd1 Rc3 25.Bc6 Se8
 26.Kg2 h1=B+ 27.Kh2 Be4 28.d×e4 f6 29.Sd3 Ke6
 30.Rh1

Pronkin: Qd1 and Rh1
 Ceriani-Frolkin: d1=S and h1=B
 AUW with cyclic effect:
 Q-promotion on bishop home square
 B-promotion on rook home square
 R-promotion on knight home square
 S-promotion on queen home square
 No unthematic captures

H75



PG30,0

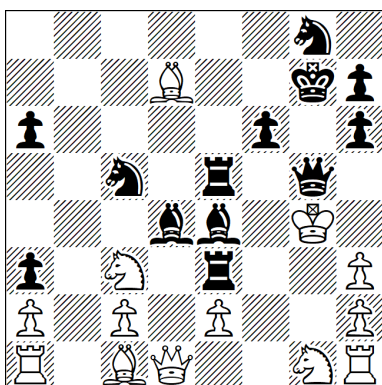
(13+13) C+

1.e4 f5 2.e5 Sf6 3.e×f6 e5 4.h4 e4 5.h5 e3 6.h6 e2
 7.h×g7 h5 8.g8=Q h4 9.Qb3 h3 10.Qb6 a×b6 11.g4 Ra3
 12.Bg2 Rc3 13.d×c3 h2 14.Bh6 f4 15.Kd2 e1=R 16.Sh3
 Re5 17.Re1 h1=S 18.g5 Sg3 19.g6 Sf5 20.g7 Se7
 21.g8=B Bg7 22.Bc4 d5 23.a4 0-0 24.a5 Kh8 25.a6 Sg8
 26.a7 Qe7 27.a8=Q d×c4 28.Qa3 Ra5 29.Qc5 Ra8
 30.Ra5 b×c5

Presentation with five thematic pieces, three Ceriani-Frolkin,
 two Pronkin, AUW+1, plus black castling.

FPG notation: CF(Q,Q,B) & PR(r,s).

H76



PG30,0

(13+13) C?

1.d4 Sa6 2.d5 Sc5 3.d6 a6 4.dxc7 d5 5.Qd2 d4 6.Qh6 d3
7.f4 d2+ 8.Kf2 d1=S+ 9.Kg3 Sf2 10.f5 Sh3 11.gxh3 gxh6
12.Bg2 Bg7 13.Bc6+ Kf8 14.Ba4 b5 15.Kg4 Bb7 16.c8=Q
bxa4 17.Qd7 a3 18.Qd1 Bd4 19.f6 Qd6 20.fxe7+ Kg7
21.e8=B Se7 22.Bd7 Rhe8 23.b4 Sg8 24.b5 Re3 25.b6
Be4 26.b7 Re8 27.b8=Q Re5 28.Qd8 Qg6+ 29.Qg5 f6
30.Sc3 Qxg5†

Thematic square: d1

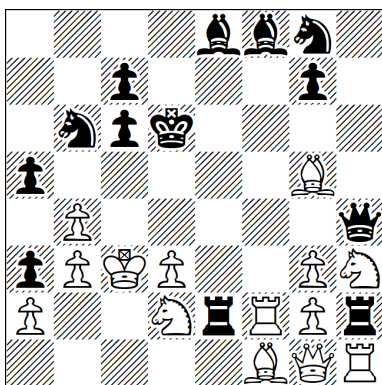
Thematic pieces: wQ, promoted bS

Phoenix theme: 21.e8=B

Klasinc theme: 21...Se7; 22...Rhe8; 23...Sg8

Prentos theme: 30...Qxg5†

H77



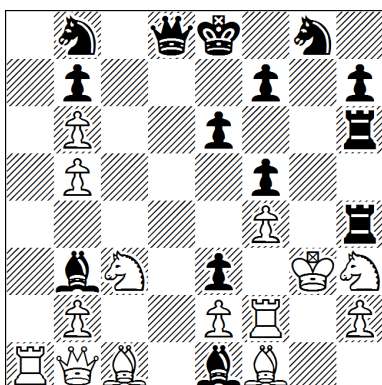
PG30,0

(14+13) C+

1.f4 a5 2.f5 a4 3.f6 a3 4.fxe7 f5 5.e4 f4 6.Ba6 f3 7.d3
f2+ 8.Kd2 f1=S+ 9.Kc3 Sg3 10.hxg3 bxa6 11.Rh6 a5
12.Rc6 dxc6 13.e5 Kd7 14.e6+ Kd6 15.e8=B h5 16.e7
h4 17.Bh5 h3 18.e8=R h2 19.Re1 h1=Q 20.Be2 Rh2
21.Sh3 Qh4 22.Bg5 Qf1 23.Sd2 Qf7 24.Rh1 Sd7 25.Qg1
Sb6 26.Rf1 Bd7 27.Rf2 Re8 28.Bf1 Re2 29.b4 Qb3+
30.cxb3 Be8

Double theme presentation. AUW with separation of
theme elements: Ceriani-Frolkin for Black, Pronkin for
White. The two white Pronkin pieces are promoted on
the same square e8, and later this square is visited by
black pieces of the same type (rook, bishop).

H78



PG33,0

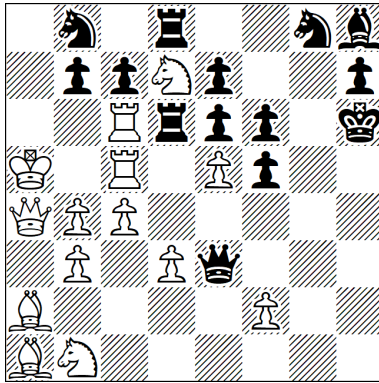
(14+14) C+

1.a4 c5 2.a5 Qb6 3.axb6 a5 4.Ra3 a4 5.Re3 a3 6.g4 Ra4
7.g5 Rh4 8.f4 d5 9.Kf2 d4 10.Kg3 dxe3 11.d4 a2 12.d5
a1=S 13.d6 Sb3 14.cxb3 Be6 15.b4 Bb3 16.g6 e6
17.d7+ Ke7 18.d8=B+ Ke8 19.Bf6 gxf6 20.g7 Se7
21.g8=R c4 22.Rg5 Rg8 23.Sh3 Rg6 24.Rg1 Rgh6 25.Ra5
Sg8 26.b5 Bb4 27.Rg2 Be1+ 28.Rf2 c3 29.Bd2 c2 30.Sc3
f5 31.Qb1 c1=Q 32.Ra1 Qd1 33.Bc1 Qd8

AUW. Switchback by bK.

Theme x 2 in economical form (only the minimum of
captures requested for this: 4). The 4 promotion
squares are occupied by seemingly original pieces.
The promotion to Ceriani-Frolkin squares are occupied
by Pronkin pieces (the requested theme).
The promotion to Pronkin squares are occupied by
switchback pieces. The pieces on the promotion
squares are of 4 different types (Q,R,B;S).

H79



PG36,0

(14+14) C?

1.h4 Sh6 2.h5 Sf5 3.h6 g6 4.Rh5 Sg7 5.hxg7 Sa6 6.g8=S
 Bg7 7.Sh6 Rg8 8.Rc5 Bh8 9.Sf5 gxf5 10.g4 Rg6 11.g5
 Rd6 12.g6 f6 13.g7 Kf7 14.g8=B+ Kg6 15.Be6 dxe6
 16.e4 Bd7 17.Bc4 Ba4 18.d3 Bb3 19.axb3 Sb8 20.Ra6
 Qf8 21.Rac6 a5 22.Kd2 a4 23.Kc3 a3 24.Kb4 Sa6+
 25.Ka5 a2 26.b4 a1=S 27.Ba2 Qh6 28.c4 Sc2 29.Sf3 Se3
 30.Qa4 Sg4 31.b3 Qe3 32.Bb2 Sh6 33.Ba1 Sg8 34.Se5+
 Kh6 35.Sd7 Rd8 36.e5 Sb8

Partial duplication of the theme.

3 switchbacks of the same piece (Sb8-a6-b8-a6-b8)

Black is in Zugzwang after the W5 move: 5...Sc6?

prohibits 17...Bd7-a4, 5...a6? prohibits 20.Ra6, 5...f6?

prohibits 11...Rg6-d6.