

SECTION H: RETROS

H01: Compare to H01a/H02a.

H02: Compare to H01a/H02a.

H18b: Country's comment: "Promotions Q, R, B & S (AUW)". The twin is C+ by Jacobi v0.7.5.

H23: The twins H23c & H23d are C+ by Jacobi v0.7.5.

H29: Cooked in part b), for instance: 1.b4 Qd8 2.h4 a4 3.h5 a3 4.h6 a2 5.h×g7 a1=B 6.g×f8=R Bg7 7.Qb3 Kb7 8.Re1 Kc6 9.Ree6 d×e6 10.Kf1 Kd7 11.Rf7+ Ke8 12.Ke2 Bf8 13.Rgg7

H47: Compare to H47a.

H52: C+ is confirmed (the country submitted the Natch output file)

H54: Compare to the problem by Silvio Baier given as a comment to H54 itself.

H59: C+ is confirmed (the country submitted the Natch output file)

H62: Country's comment: "Since thematic moves were not highlighted in bold, the comment about geometric symmetry of all thematic moves might not be clear that it refers to all 5 pairs of thematic moves (all captures, all promotions and all returns to thematic squares)."

H69: C+ is confirmed (the country submitted the Natch output file)

H78: C+ is confirmed (the country submitted the Natch output file)

H79: Cooked, for instance 1.h4 g6 2.h5 f6 3.h6 Kf7 4.Rh5 Ke6 5.Rc5 Qe8 6.g4 Qf7 7.g5 Qg7 8.h×g7 Sh6 9.g8=S Sf7 10.Sh6 Bg7 11.Sf5 g×f5 12.g6 Rd8 13.Sf3 Bh8 14.g7 Sh6 15.e4 Kf7 16.g8=B+ Kg7 17.Be6 d×e6 18.Bc4 Bd7 19.Se5 Ba4 20.d3 Bb3 21.a×b3 Rd6 22.Ra6 Sg8 23.Rac6 a5 24.Kd2 a4 25.Kc3 a3 26.Kb4 Sa6+ 27.Ka5 a2 28.b4 a1=Q+ 29.Ba2 Rc8 30.c4 Rcd8 31.Qa4 Sb8 32.b3 Qd4 33.Bb2 Kh6 34.Ba1 Qe3 35.Sd7 Qf3 36.e5 Qe3

H01a/H02a
 Andrew Buchanan
 Noam Elkies

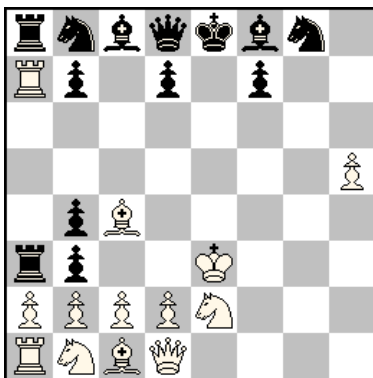
Andrew Buchanan's site 2002



- a) 1.f4 a5 2.f5 a4 3.f6 a3 4.f×g7 a×b2 5.g×f8=B b×a1=B 6.B×e7 Bg7
 7.Bf8 B×f8
 b) 1.f4 a5 2.f5 a4 3.f6 a3 4.f×e7 a×b2 5.e×d8=S b×a1=Q 6.S×b7 Qf6
 7.Sd8 Q×d8
 c) 1.f4 a5 2.f5 a4 3.f6 a3 4.f×e7 a×b2 5.e×d8=B b×a1=Q 6.B×c7 Qf6
 7.Bd8 Q×d8
 d) 1.f4 a5 2.f5 a4 3.f6 a3 4.f×g7 a×b2 5.g×f8=S b×a1=B 6.S×d7 Bg7
 7.Sf8 B×f8

PG 7.0 b) ♠b7→g7 (13+13)
 c) ♠c7→g7
 d) ♠d7→e7

H47a
 Silvio Baier
 Olympic Tourney Istanbul 2012
 1. Prize



- 1.f4 h5 2.f5 h4 3.f6 h3 4.f×e7 h×g2 5.e×f8=B Rh3 6.Bb4 Ra3 7.h4 a5
 8.h5 a×b4 9.Rh4 b3 10.Ra4 g5 11.e4 g4 12.Bc4 g3 13.Se2 g1=B 14.e5
 Bc5 15.e6 Bf8 16.e7 g2 17.e×f8=B g1=B 18.Bb4 Bc5 19.Ra7 Bf8 20.Kf2
 c5 21.Ke3 c×b4

PG 21.0 (13+13)