

## SECTION E: HELPMATES

E16: Comment should read "Chumakov × 2" as there are two pairs of Chumakov pieces.

E20: Compare to E20a.

E26: Compare to E26a.

E34: Solutions should read:

1...Sc1 2.Be7 (Re7?) f×e7 3.b×c1=B (=Q?) e8=Q (=S?) 4.Bg5 Qe2‡

1...Sg1 2.Re7 (Be7?) f×e7 3.f×g1=R (=Q?) e8=S (=Q?) 4.Rg5 Sf6‡

E35: Country's original comment was: "Double presentation of the theme."

E38: Compare to E38a.

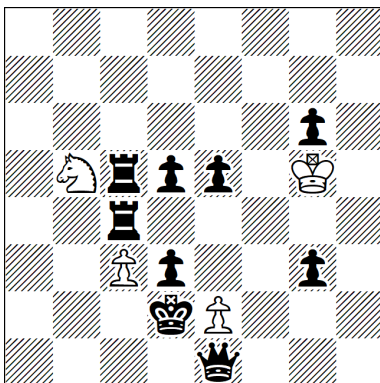
E54: Compare to E54a.

E59: Illegal position. White pawns had captured 5 black pieces, but only 4 pieces are available since the original black Bf8 was not captured by a pawn.

E65: The country wishes to describe the content more precisely: "Active cyclic Zilahi, cycle of W1/W4 moves. Kniest at W1, black Durbar (analogy of the 3×3 bK-moves), uniform twinning."

E73: Solution was not written as given by the country, see full text below.

E73



1...Sd4 (1.S~?) 2.K×c3 Kg4 3.K×d4 Kf3 4.Qc3 e3‡

1...e4 (1.e3?) 2.Ke3 Kh4 3.K×e4 Kg4 4.Qe3 Sd6‡

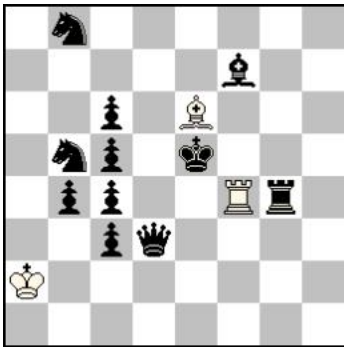
Interferences on the fourth row and Zilahi.

h‡3,5

2.1.1...

(4+9)

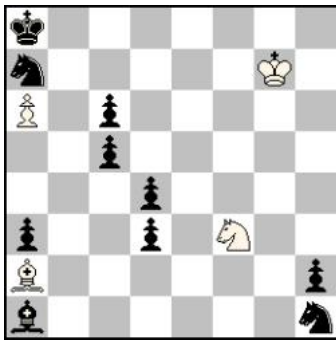
E20a  
 Jorge J. Lois  
 Probleemblad 2017



h†3,5    b) - ♠b4    (3+11)

- a) 1...Rxc4 2.Rd4 Bg4 3.Kd5 Bd1 4.Kxc4 Bb3†  
 b) 1...Bxc4 2.Bd5 Rf7 3.Kd4 Ra7 4.Kxc4 Ra4†

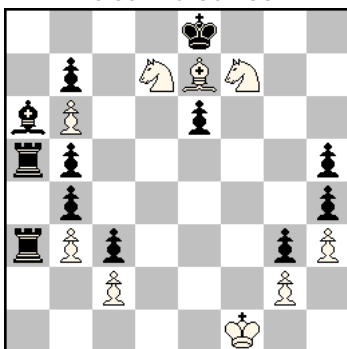
E38a  
 Christer Jonsson  
 Problem Paradise 2013



h†3,5    2.1.1...    (4+10)

- 1...Bb1 2.a2 Sg5 3.axb1=R Se6 4.Rb8 Sc7†  
 1...Sg1 2.hxg1=B Be6 3.Bh2 Bc8 4.Bb8 Bb7†

E54a  
 Christer Jonsson  
 Rolf Wiehagen  
 dedicated to C.J. Feather  
 Die Schwalbe 2002



h†4    (9+12)  
 1.2.1.1... + 1.1...

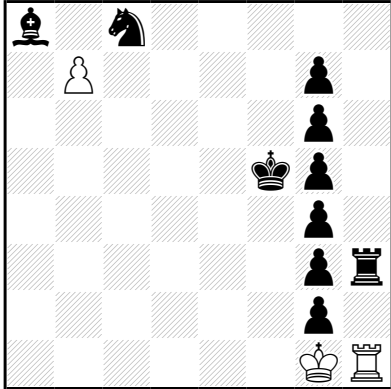
- 1.Kxd7 Bxb4 2.Kc6 Bc5 3.Kxc5 Se5 4.Kb4 Sd3†  
 1.Kxd7 Sd6 2.Kc6 Sxb7 3.Kxb6 Sxa5 4.Kxa5 Bd8†  
 1.Kxf7 Bxh4 2.Kg6 Bg5 3.Kxg5 Se5 4.Kh4 Sf3†

## E26a

Ladislav Packa

Mat 64 2000

2nd Honourable Mention



b1s5/1P4p1/6p1/5kp1/6p1/6pr/6p1/6KR

White : Kg1 Rh1 Pb7

Black : Kf5 Rh3 Ba8 Sc8 Pg7g6g5g4g3g2

h#3 (3+10) C+

3.1.1...

1.Rh7 Rh5 2.g×h5 b×c8=Q+ 3.Kg6 Qe6#

1.Rh6 Rh4 2.g×h4 b8=Q 3.Kg5 Qe5#

1.Rh5 Rh3 2.g×h3 b×a8=Q 3.Kg4 Qe4#