

**WINTON CAPITAL BRITISH CHESS SOLVING CHAMPIONSHIP  
2015-2016  
THE FINAL  
ETON COLLEGE, Saturday 20th February, 2016**

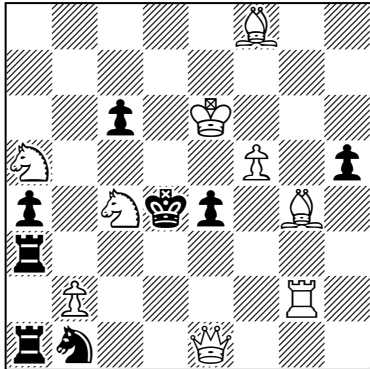
ROUND 1: TWO-MOVERS

TIME: 20 minutes

SOLVER:

**1) Aleksey G Kopnin**

HM., October Revolution-70 JT, 1987



Mate in 2 (9 + 8)  
5 points

1. ♖e5? (2. ♗axc6#)

1... e3 2. ♖b4#  
1... ♖c3!

1. ♗e2? (2. ♗xc6#)

1... e3 2. ♖h4#  
1... ♖d3!

1. ♖b4? (2. ♖d6#)

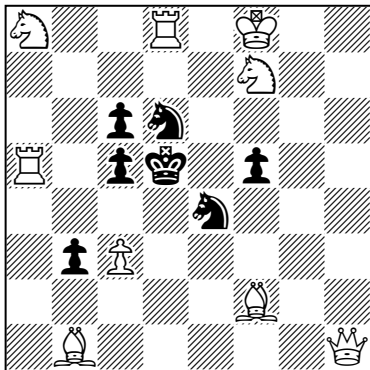
1... ♗c3 2. ♖d2#  
1... e3 2. ♗e5#  
1... c5!

**1. ♖h4! (5)**  
(2. ♖d8#)

1... ♗c3 2. ♖d2#  
1... e3 2. ♗e2#  
1... ♖d3 2. ♖d8#

**2) Givi Mosiashvili**

3rd Prize, *Probleemblad*, 1998



Mate in 2 (9 + 7)  
5 points

1. ♗e1? 1... ♖e6!

1. ♗h4? 1... ♖c4!

1. ♗d4? 1... f4!

1. ♖f3? 1... ♖e6!

1. ♖h4? 1... f4!

**1. ♖e1! 0 (5)**

1... ♖c4 2. ♗b6#

1... ♖e6 2. ♖xd6#

1... b2 2. ♗a2#

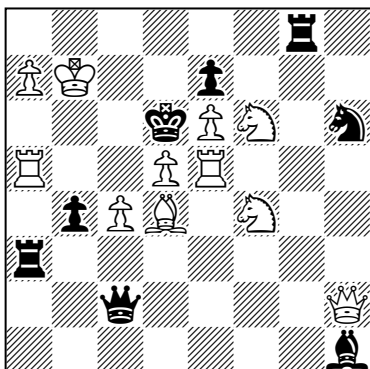
1... f4 2. ♖xe4#

1... ♗xf2 2. ♗b6#

1... ♗e else 2. ♗b6, ♖xc5#

**3) Vincenzo Tinebra**

*British Chess Magazine*, 1979



Mate in 2 (11 + 8)  
5 points

1. ♖e2? 1... ♗e4!

1. ♖g5? 1... ♗f5!

1. ♗d3? 1... ♖xa5!

1. ♗e2? 1... ♖xc4!

1. ♗g6? 1... ♖c8!

**1. ♗g2! (5)**  
(2. ♗c5#)

1... ♖b8+ 2. axb8=♗, ♖

1... ♖xa5 2. ♖g5#

1... ♖xc4 2. ♗e4#

1... ♖ag3 2. ♖a6#

1... ♖gg3 2. ♗e8#

1... ♖c8 2. ♖e3#

1... ♖f2 2. ♗e4,c5#

**WINTON CAPITAL BRITISH CHESS SOLVING CHAMPIONSHIP  
2015-2016  
THE FINAL  
ETON COLLEGE, Saturday 20th February, 2016**

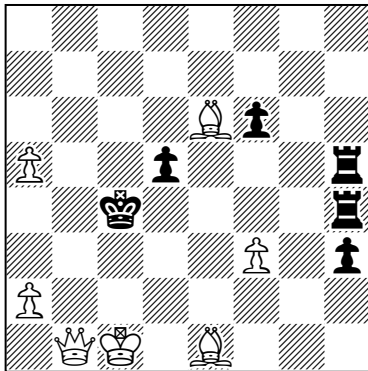
ROUND 2: threemovers

TIME: 40 minutes

SOLVER:

**1) Frantisek Havelka**

*Lucan, 1900*



Mate in 3 (7 + 6)  
5 points

**1. ♕d7!**

(2. ♖c2+ ♖d4 3. ♖c3#) (1)

**1... ♖d4 2. ♕f2+** ♖c3 3. ♖b3# (2)

♖c4 3. ♖b3#

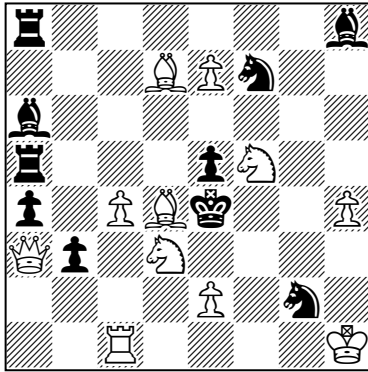
♖e5 3. ♖b8#

**1... ♖c5 2. ♖b6+** ♖c4 3. ♕b5# (1)

**1... d4 2. ♖b3+** ♖c5 3. ♕b4# (1)

**2) Mikhail Marandiuk**

*2<sup>nd</sup> Prize, Szwedowski-75 JT, 2008*



Mate in 3 (11 + 10)  
5 points

**1. ♖c3!**

(2. ♕f2+ ♖f4 3. ♖f3#) (1)

**1... ♕g5 2. ♖d6** (3. ♕g3#) (1½)

exd4 3. ♕f2#

♖d5 3. ♖xd5#

**1... ♕b7 2. ♖c1** (3. ♕f2#) (1½)

exd4 3. ♕g3#

♕e3 3. ♖xe3#

**1... exd4 2. ♕g3+** ♖e3 3. ♖c1# (1)



**WINTON CAPITAL BRITISH CHESS SOLVING CHAMPIONSHIP  
2015-2016  
THE FINAL  
ETON COLLEGE, Saturday 20th February, 2016**

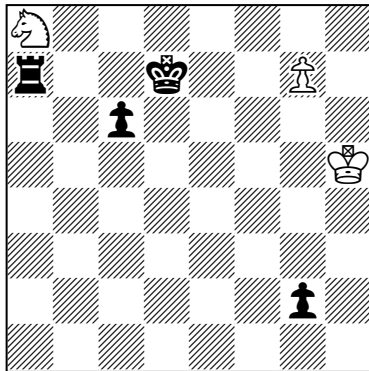
ROUND 3: Two endgame studies

TIME: 60 minutes

SOLVER:

**1) Martin Minski**

Original for WBCSC



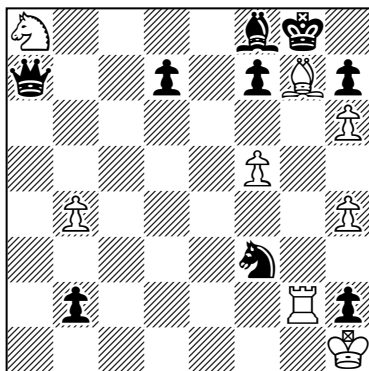
White to play and win (3 + 4)  
5 points

1. ♖b6+! (i) (1)  
1... ♜d6! (ii) 2. ♖c4+! (iii) (1)  
2... ♜c5 3. g8♙ (1)  
3... ♜h7+?! (iv) 4. ♜xh7 (1)  
4... g1♙ 5. ♜a7+ 1-0 (1)

- (i) 1. g8♙? ♜xa8! 2. ♜f7+ (2. ♜xg2?? ♜h8+ 0-1; 2. ♜xa8 g1♙=) 2... ♜d6  
3. ♜g6+ ♜c5 ~ 4. ♜h6 ♜a2 =  
(ii) 1... ♜c7 ♜ else 2. g8♙ 1-0  
(iii) 2. ♖c8+? ♜e5! 3. g8♙ ♜h7+! 4. ♜xh7 g1♙ =; 2. g8♙? ♜h7+! 3. ♜xh7  
g1♙ =  
(iv) 3... ♜a8!? 4. ♜xa8 g1♙ 5. ♜a7+ 1-0

**2) Michael Roxlau**

1<sup>st</sup> Prize, Krivogo Roga JT, 2000



White to play and win (8 + 9)  
5 points

1. ♖e5+ ♖g7 2. ♜xg7+ (½)  
2... ♜h8 3. ♜xf7+ (i) (½)  
3... ♜g8 4. ♜g7+ (½)  
4... ♜h8 (ii) 5. ♖xb2 (½)  
5... ♖d4 6. ♜g2! (½)  
6... d5! (iii) 7. ♜g6! (iv) (½)  
7... hxg6 8. fxg6 (½)  
8... ♜g8 9. h7+! (v) (½)  
9... ♜g7! (vi) 10. h5! (vii) (½)  
10... ♜h8! 11. ♖c7! (viii) 1-0 (ix) (½)

- (i) 3. ♖xb2? ♖d4 4. ♖c7 ♜xc7 5. ♖xd4 f6 =  
(ii) 4... ♜f8 5. ♖d6+ ♜e8 6. ♜g8+ ♜f7 7. ♜f8#  
(iii) 6... d6 7. ♖c7!  
(iv) 7. ♜g7? ♜a4=; 7. ♖c7? ♜a1+! 8. ♜xh2 ♜g1+ 9. ♜g3 ♜e3+ 10. ♜h2 ♜g1+ =;  
7. ♜xh2? ♜xa8 8. ♜g2 ♜a1+ 9. ♜h2 ♜g1+ 10. ♜xg1 =  
(v) 9. ♖c7? ♜xc7 10. h7+ ♜g7 11. ♖xd4+ ♜xg6 12. h8♙ ♜c1+ 13. ♜xh2 ♜c2+  
14. ♜g3 ♜d3+ 15. ♜f4 ♜e4+ 16. ♜g3 ♜d3+ 17. ♜g2 ♜e4+ 18. ♜f2 ♜f5+=; 9. h5?  
♜f8 10. h7 ♜g7 =  
(vi) 9... ♜h8 10. ♖c7! ♜b6 11. ♖e6 1-0  
(vii) 10. ♖c3? ♜e7 11. ♖xd4+ ♜xg6 12. h8♙ ♜e4+ 13. ♜xh2 ♜e2+ 14. ♜g3 ♜d3+  
15. ♜f2 ♜c2+ 16. ♜f1 ♜d3+ 17. ♜e1 ♜e4+ 18. ♜d1 ♜f3+ 19. ♜d2 ♜g2+ 20. ♜c3  
♜f3+ 21. ♜b2 ♜e2+ 22. ♜a3 ♜a6+ 23. ♜b3 ♜c4+ 24. ♜b2 ♜e2+ =  
(viii) 11. h6? ♜a1+ 12. ♖xa1 =  
(ix) For instance 11... ♜b6 12. ♖b5 or 12. ♖e6

**WINTON CAPITAL BRITISH CHESS SOLVING CHAMPIONSHIP  
2015-2016  
THE FINAL  
ETON COLLEGE, Saturday 20th February, 2016**

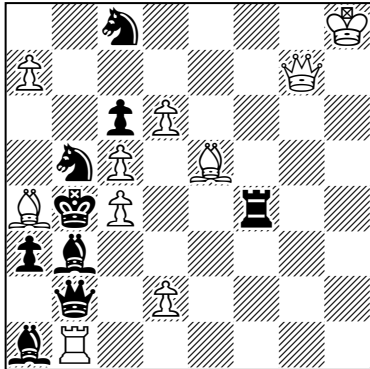
ROUND 4: Helpmates

TIME: 25 minutes

SOLVER:

**1. Manne Persson**

2<sup>nd</sup> HM., *Thema Danicum*, 1988

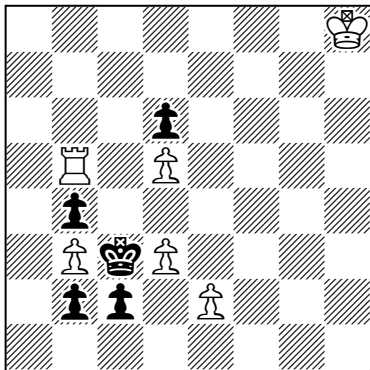


1. ♖b×d6 ♙×d6 2. ♙×a4 ♚c3# (2½)  
1. ♖b×a7 ♚×a7 2. ♙×c4 ♙c3# (2½)

H#2 (2 solutions) (10 + 9)  
5 points (2½ + 2½)

**2. Henry Tanner**

2<sup>nd</sup> HM., *Best Problems*, 2003



1. c1=♖ ♙a5 2. ♖×d3 ♙a1 3. ♖e1 ♙d1 4. ♖c2 ♙d3# (2½)  
1. ♙d4 ♙b6 2. ♙×d5 d4 3. ♙×d4 ♙×d6+ 4. ♙c3 ♙d3# (2½)

H#4 (2 solutions) (6 + 5)  
5 points (2½ + 2½)

# WINTON CAPITAL BRITISH CHESS SOLVING CHAMPIONSHIP 2015-2016 THE FINAL ETON COLLEGE, Saturday 20th February, 2016

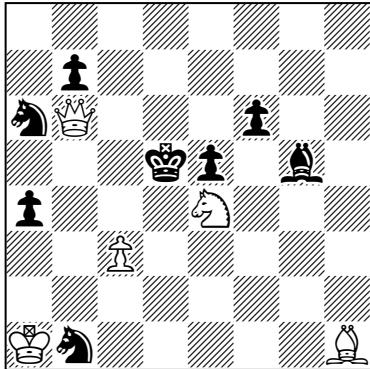
ROUND 5: Moremovers

TIME: 55 minutes

SOLVER:

## 1) Vladimir Pachman

3<sup>rd</sup> HM., *Ceskoslovensky Sach*, 1954/II



Mate in 4 (5 + 8)  
5 points

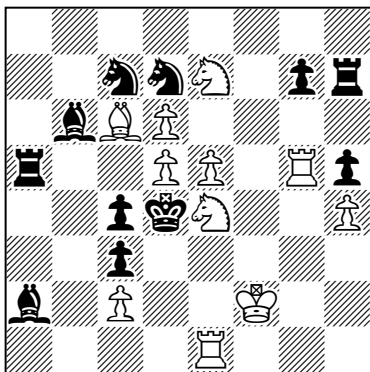
1. ♖f3!

(2. ♘xf6+ ♖c4 3. ♙e2+ ♖xc3 4. ♗b2#) (1)

1... ♖c4	2. ♙e2+	♖d5	3. ♙d3	&	4. ♗d6,c4#	(1)
1... ♘xc3	2. ♘xc3+	♖c4	3. ♙e2+	♖xc3	4. ♗b2#	(1)
1... ♙c1	2. c4+	♖xc4	3. ♙e2+	♖d5	4. ♘xf6#	(1)
1... a3	2. ♗d6+	♖c4	3. ♙e2+	♖b3	4. ♗d1#	(½)
1... ♘b4	2. ♘c5+	e4	3. ♙xe4+	♖c4	4. ♗xb4#	(½)
				♖e5	4. ♗c7#	

## 2) V Kryzhanivsky

4<sup>th</sup> Prize, *Weissauer-85 JT*, 2007



Mate in 4 (11 + 11)  
5 points

1. ♙b7!

(2. ♘c6+ ♖xd5+ 3. ♘d4+ ♖xd4 4. ♗d1#) (1)

1... ♗a7	2. e6	(3. ♘c6#)		4. ♗d1#	(2)
1... ♘c5	2. ♘f5+	♘b8	3. ♗f3	&	4. ♗d1#
1... ♗c5	2. ♗d1+	♖xe5	3. ♘e7+	♖d4	4. ♘c6#
				♖f4	4. ♘g6#
			3. ♗e1+	♖d4	4. ♘f5#
				♖f4	4. ♘g6#

**WINTON CAPITAL BRITISH CHESS SOLVING CHAMPIONSHIP  
2015-2016  
THE FINAL  
ETON COLLEGE, Saturday 20th February, 2016**

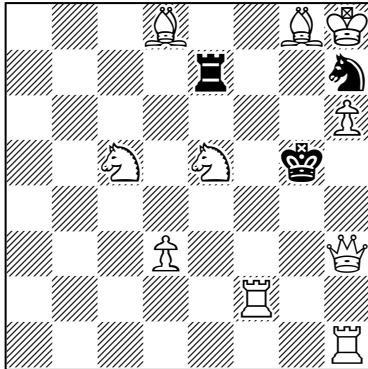
ROUND 6: Selfmates

TIME: 30 minutes

SOLVER:

**1. Ladislav Knotek**

*Narodni listy, 1933*

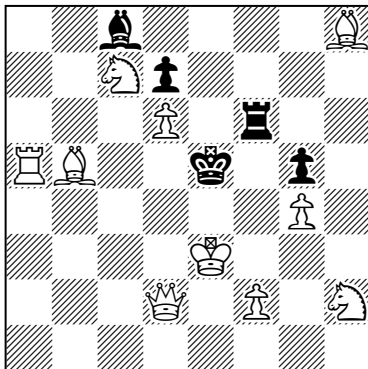


Selfmate in 3 (10 + 3)  
5 points

1. ♖f8! ○
- 1... ♗f6 2. ♕e3+ ♖f5 3. ♘h7+ ♙xh7# (2½)  
1... ♗xg8 2. ♗e4+ ♖f4 3. ♗g6+ ♘xg6# (2½)

**2. Philip H. Williams**

*Chess Review, 1893*



Selfmate in 5 (10 + 5)  
5 points

1. ♕b4! ○
- 1... ♗a6 2. ♗c6+ ♗b5 3. ♗f1 dxc6 4. ♗d2 c5 5. ♕d4+ cxd4# (2½)  
1... ♗b7 2. ♗f1+ ♗d5 3. f4+ gxf4+ 4. ♖f2 f3 5. ♕g1 f2# (2½)